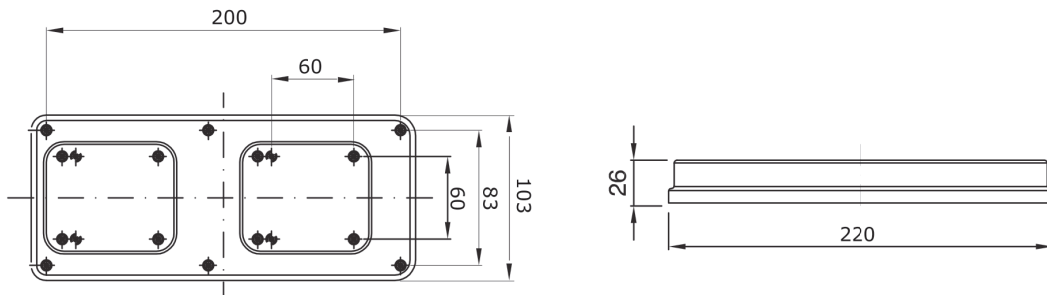
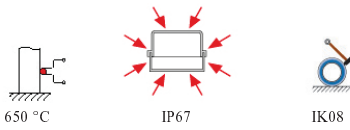


Glow Wire Test	650 °C	IP degree	IP67
Shock resistance	IK08	Electrocod	2222
Houseable IB socket-outlets	N.1 IEC 309 16-32A IP44/67 + N.1 16A MAX 3P+E or GW274		

DIMENSIONAL



TECHNICAL SYMBOLOGY



STANDARDS/APPROVALS



<p>GEWISS S.p.A. Via A. Volta, 1 24069 Cenate Sotto - Bergamo - Italy tel. +39 035 94 61 11 fax +39 035 94 69 09</p>	<p>www.gewiss.com sat@gewiss.com Last update 22/05/2018</p>	<p>Data, measures, designs and pictures are shown only as informativ purposes, and could be changed without previous notice</p>
--	---	---