



Type SHS3  
601-9390-023

### Type SHS3 - Safety Hinge Switches

DESCRIPTION	PART NUMBER	TRADE PRICE
Cable, Axial, Switch Mounted RHS	601-9390-022	
Cable, Axial, Switch Mounted LHS	601-9390-023	
Non-Switched Hinge	601-9390-038	
Change Kit. Re-adjustment Switch Point	399-1990-161	



Type I88-VKW  
608-6100-094  
(refer EIC - POA)

### Type GC-VKS/VKW - Flaps & Door Switches

DESCRIPTION	PART NUMBER	TRADE PRICE
Metal Body, Linear Arm - 0° ~ 90°	612-1100-622	
Metal Body, Linear Arm - 0° ~ 180°	612-1100-623	

### Type I88-AHDB - Door Axis Switches

DESCRIPTION	PART NUMBER	TRADE PRICE
Plastic Body 360° 1NO/1NC	618-6100-267	

### Type SK/SKC - Interlock Position Switches

DESCRIPTION	PART NUMBER	TRADE PRICE
Plastic Body 10N 1NC/1NO	601-6119-016	
Plastic Body 10N 2NC	601-6169-053	
Plastic Body 10N 2NC/1NO	601-6169-026	



Type GC-VKW  
612-1100-623

### Type SKI - Interlock Position Switches

DESCRIPTION	PART NUMBER	TRADE PRICE
Plastic Body 1NC/1NO	601-6819-052	

### Type I88/GC-VT - Pin Switches

DESCRIPTION	PART NUMBER	TRADE PRICE
Plastic Body 1NC/1NO	601-6819-018	
Metal Body 60N 1NC/1NO	612-1100-555	



Type I88-AHDB  
618-6100-267

### Type SNA - Emergency Stop Switches

DESCRIPTION	PART NUMBER	TRADE PRICE
Emergency Stop Button Twist to Release c/w NC Contact (forced disconnect)	601-9169-001	
Emergency Stop Button Key Release c/w NC Contact (forced disconnect)	601-9169-002	
Spare Contact Block 1NC	601-9169-005	
Spare Contact Block 1NO	601-9169-006	



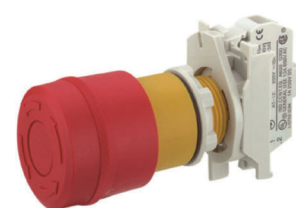
Type SK  
601-6119-016



Type SKI  
601-6819-052



Type GC-VT  
612-1100-555



Type SNA  
601-9169-001

**THIS IS A SMALL REPRESENTATION OF THE SWITCHES AVAILABLE**  
Contact EIC for more options