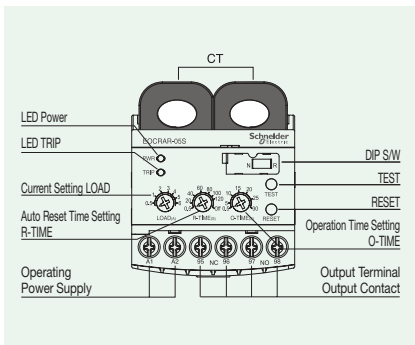


EOCR-AR

Auto-resettable Electronic Over Current Relay



- Micro compact size
- Protection against over current/phase loss/locked rotor (phase loss/locked rotor operates by over current)
- Start delay/operation delay time integral type
- Wide setting range: Protects up to 0.1~400A with 3 types
- Operation display and active current check (red LED)
- Strong environmental resistance
- Super energy-saver
- Auto reset (reset time setting)/manual reset
- No volt release / Fail-safe Operation → N type
- ※ Single-phase/3-phase available



Usage

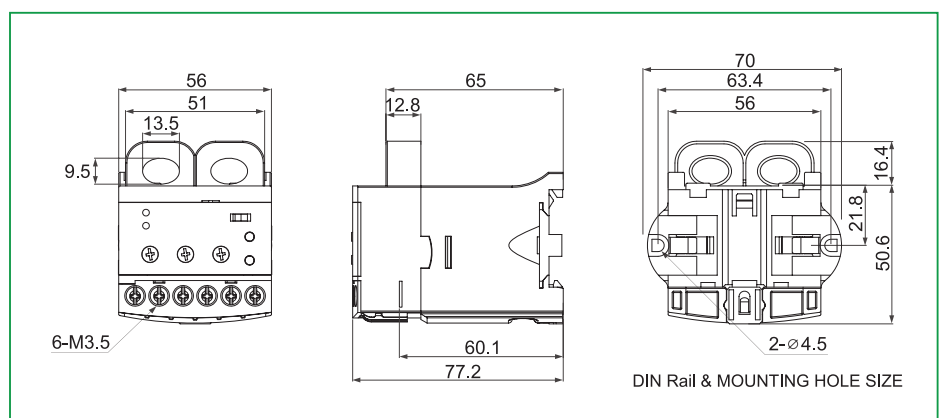
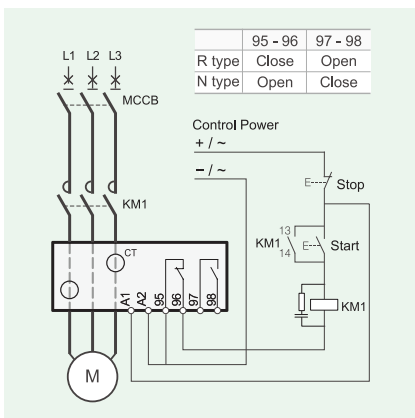
- Auto reset function appropriate for unmanned installations.

Protection Function

Protected Items	Operation Time
Over Current	O-TIME
Phase Loss	O-TIME
Locked Rotor	O-TIME

Specifications

Current Setting	Type	Setting Range	
	5	0.5~6A	
	30	3.0~30A	
	60	5.0~60A	
	60~400	Used by combining 05Type and an external CT (external CT current transformer ratio: 100/5A~400/5A)	
Time Setting	Operation Time	O-TIME	0.5~30 sec
	Reset Time	R-TIME	0.5~120 sec
Reset	Auto reset / manual (instant) reset / electrical (remote) reset		
Operation Time Characteristic	Definite		
Operating Power Supply	Voltage	S	24~240V AC/DC
	W		380~440V AC
Supply	Frequency	50/60Hz	
Auxiliary Contact	Type	2-SPST (1a1b)	
	State	R Type	Normally de-energized (regardless of power supply: 95-96 Close, 97-98 Open)
		N Type	Normally energized (after power is supplied: 95-98 Open, 97-98 Close)
Rating	AC250V / 3A resistive load		
Attachment	35mm DIN Rail / Panel		



※ "N"(Fail safe)Type converts 95-96 to open and 97-98 to close when operating power is supplied to A1 and A2 (or L1 and L2).