

Contactors

ELECTRICAL CHARACTERISTICS					
Contactor type:		CTR 20 - CTRM 20	CTR 25 - CTRM 25	CTR 40	CTR 63
Standard:		EN 61095, EN 60947-4-1, EN60947-5-1			
Rated current AC-1/AC-7a (In):	(A)	20	25	40	63
Rated operational voltage (Ue):	(V)	230 AC (1NO) 400 AC (1NO+NC - 1CO - 2CO - 4NO)			
Rated insulation voltage (Ui):	(V)	440 AC			
Rated impulse withstand voltage (Uimp):	(kV)	4			
Rated conditional short-circuit current with fuse:	(kA)	3 (gL 20)	3 (gL 25)	3 (gL 63)	3 (gL 80)
Rated frequency:	(Hz)	50/60			
No. of modules:		1 (1NO - 2NO - 1NO+1NC) 2 (3NO - 4NO)	2		3
Power loss per pole (AC-1 / AC-7a):	(W)	1.7	2.2	4	8
Mechanical endurance (no. of operations):		3 x 10 ⁶			
Operating temperature:	(°C)	-15...+55 (1NO - 1CO - 2CO - 1NO+NC) -25...+55 (2NO - 4NO)			
Storage temperature:	(°C)	-30...+80			
Max number of contactors (side-by-side):		3 (≤ 40 °C) ⁽²⁾ 2 (40 - 55 °C) ⁽²⁾			
Rated tightening torque:	(Nm)	1.2		3.5	
Terminal screw type:		M3.5		M5	
Screwdriver suggested:		PZ1		PZ2	
Cable section:	rigid (mm ²)	1...10		1.5...25	
	flexible (mm ²)	1...6		1.5...16	
Weight	(g)	130	240	420	
CONTROL COIL CHARACTERISTICS					
Control coil voltage (Uc):	(V)	24 - 230 AC	24 - 230 AC / 24 - 220 DC		
Min operating coil voltage:	(V)	85% Uc			
Max operating coil voltage:	(V)	110% Uc			
Frequency:	(Hz)	50/60 ⁽³⁾			
Switch-on coil consumption:	(VA / W)	12 / 10	2.6 / 2.6 ⁽⁴⁾ 3.8 / 3.8 ⁽⁵⁾	5 / 5	
Operation coil consumption:	(VA / W)	2.8 / 1.2	2.6 / 2.6 ⁽⁴⁾ 3.8 / 3.8 ⁽⁵⁾	5 / 5	
Rated tightening torque:	(Nm)	0.6			
Terminal screw type:		M3		M3.5	
Screwdriver suggested:		PZ1			
Cable section:	rigid (mm ²)	1...2.5			
	flexible (mm ²)	1...2.5			
AUXILIARY CONTACT CHARACTERISTICS					
Rated operational voltage (Ue):	(V)	230 - 400 a.c.			
Rated insulation voltage (Ui):	(V)	500			
Rated impulse withstand voltage (Uimp):	(kV)	4			
Rated current AC-15 (In):	(A)	6 (230V) - 4 (400V)			
No. of modules:		0.5			
Power loss per pole (AC-15):	(W)	0.3			
Mechanical endurance (no. of operations):		3 x 10 ⁶			
Electrical endurance (no. of operations):		50,000			
Rated tightening torque:	(Nm)	0.6			
Terminal screw type:		M3			
Screwdriver suggested:		PZ1			
Cable section:	rigid (mm ²)	1...2.5			
	flexible (mm ²)	1...2.5			
Weight	(g)	35			

⁽¹⁾ It's suggested the use of a spacer insert (GW D6 766) between adjacent contactors to ensure heat dissipation.

⁽²⁾ The contactors' coils for 25, 40 and 63A versions can be controlled by AC voltage with frequency from 40 to 500Hz

⁽³⁾ For 2NO - 3NO - 4NO - 3NA+1NC versions

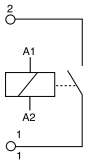
⁽⁴⁾ For 4NC versions

⁽⁵⁾ Not available for contactors with AC/DC coil

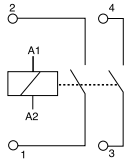
MODULAR ACCESSORIES

Circuit diagrams - Contactors

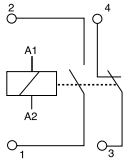
Circuit diagrams - Auxiliary contacts



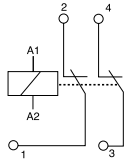
GW D6 701



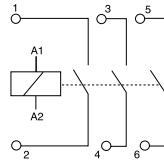
GW D6 702
GW D6 703
GW D6 711
GW D6 712



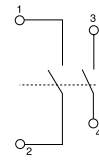
GW D6 721
GW D6 731
GW D6 741
GW D6 742
GW D6 751



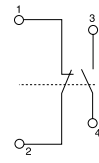
GW D6 705
GW D6 743



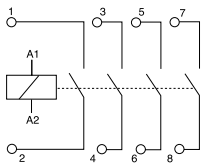
GW D6 708
GW D6 713
GW D6 722
GW D6 732
GW D6 752



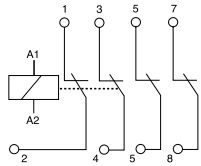
GW D6 761



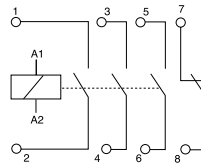
GW D6 762



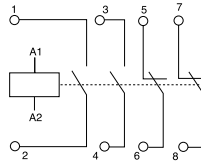
GW D6 709
GW D6 714
GW D6 715
GW D6 723



GW D6 716
GW D6 717



GW D6 718
GW D6 735



GW D6 725



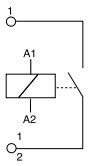
Installation relays

ELECTRICAL CHARACTERISTICS		
Contactor type:		RLM
Standard:		EN 61095, EN 60947-4-1, EN60947-5-1
Rated current AC-1/AC-7a (In):	(A)	16
Rated operational voltage (Ue):	(V)	230 AC (1NO) 400 AC (1NO+NC - 1CO - 2CO - 4NO)
Rated insulation voltage (Ui):	(V)	440 AC
Rated impulse withstand voltage (Uimp):	(kV)	4
Rated conditional short-circuit current with fuse:	(kA)	3 (gL 20)
Rated frequency:	(Hz)	50/60
No. of modules:		1 (1NO - 2NO - 1NO+1NC - 1CO) 2 (4NO - 2CO)
Power loss per pole (AC-1 / AC-7a):	(W)	1.2
Mechanical endurance (no. of operations):		3 x 10 ⁶
Operating temperature:	(°C)	-15...+55 (1NO - 1CO - 2CO - 1NO+NC) -25...+55 (2NO - 4NO)
Storage temperature:	(°C)	-30...+80
Max number of contactors (side-by-side):		3 (≤ 40 °C) 2 (40 - 55 °C)
Rated tightening torque:	(Nm)	1.2
Terminal screw type:		M3.5
Screwdriver suggested:		PZ1
Cable section:	rigid (mm²) flexible (mm²)	1...10 1...6
Weight	(g)	130 (1NO - 2NO - 1NO+1NC - 1CO) 240 (4NO - 2CO)
CONTROL COIL CHARACTERISTICS		
Control coil voltage (Uc):	(V)	8 - 230 AC 12 - 24 DC
Min operating coil voltage:	(V)	85% Uc
Max operating coil voltage:	(V)	110% Uc
Frequency:	(Hz)	50/60
Switch-on coil consumption:	(VA / W)	12 / 10 (AC Coil: 1NO - 2 NO - 1NO+1NC - 1CO) 33 / 25 (AC Coil: 4NO, 2CO) 2.1 / 2.1 (AC/DC Coil: 1CO) 2.6 / 2.6 (AC/DC Coil: 2CO)
Operation coil consumption:	(VA / W)	2.8 / 1.2 (AC Coil: 1NO - 2 NO - 1NO+1NC - 1CO) 5.5 / 1.6 (AC Coil: 4NO, 2CO) 2.1 / 2.1 (AC/DC Coil: 1CO) 2.6 / 2.6 (AC/DC Coil: 2CO)
Rated tightening torque:	(Nm)	0.6
Terminal screw type:		M3
Screwdriver suggested:		PZ1
Cable section:	rigid (mm²) flexible (mm²)	1...2.5 1...2.5
AUXILIARY CONTACT CHARACTERISTICS		
Rated operational voltage (Ue):	(V)	230 - 400 AC
Rated insulation voltage (Ui):	(V)	500
Rated impulse withstand voltage (Uimp):	(kV)	4
Rated current AC-15 (In):	(A)	6 (230V) - 4 (400V)
No. of modules:		0.5
Power loss per pole (AC-15):	(W)	0.3
Mechanical endurance (no. of operations):		3 x 10 ⁶
Electrical endurance (no. of operations):		50.000
Rated tightening torque:	(Nm)	0.8
Terminal screw type:		M3
Screwdriver suggested:		PZ1
Cable section:	rigid (mm²) flexible (mm²)	1...2.5 1...2.5
Weight	(g)	35

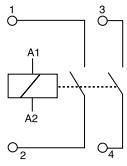
⁽¹⁾ It's suggested the use of a spacer insert (GW D6 766) between adjacent groups of relays to ensure heat dissipation.

⁽²⁾ Not available for relays with AC/DC coil

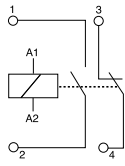
Circuit diagrams - Contactors



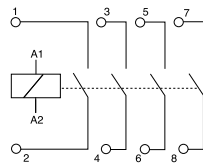
GW D6 601
GW D6 602
GW D6 603
GW D6 604



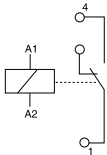
GW D6 624



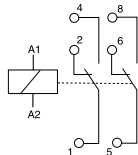
GW D6 706
GW D6 707
GW D6 744



GW D6 632
GW D6 633
GW D6 634

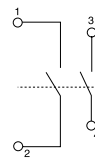


GW D6 606
GW D6 608
GW D6 610
GW D6 611

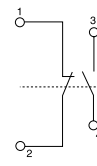


GW D6 626
GW D6 627
GW D6 629
GW D6 630

Circuit diagrams - Auxiliary contacts



GW D6 761



GW D6 762



Latching relays

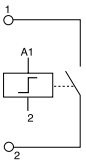
ELECTRICAL CHARACTERISTICS			
Relay type:		RLB	
Contact type:		1NO - 2NO - 1NO+1NC - 1CO	4NO - 2CO
Standard:		EN 60669-2-2	
Rated current AC-1/AC-7a (In):	(A)	16	
Rated operational voltage (Ue):	(V)	440 AC	
Rated insulation voltage (Ui):	(V)	440 AC	
Rated impulse withstand voltage (Uimp):	(kV)	4	
Rated conditional short-circuit current with fuse:	(kA)	3 (gL 20)	
Rated frequency:	(Hz)	50/60	
No. of modules:		1	2
Power loss per pole (AC-1 / AC-7a):	(W)	1	1
Mechanical endurance (no. of operations):		1 x 10 ⁶	
Operating temperature: ⁽²⁾	(°C)	AC Coil (-25...+70) DC Coil (-25...+55)	
Storage temperature:	(°C)	-30...+80	
Max number of contactors (side-by-side): ⁽¹⁾	T (≤ 40 °C)	AC Coil: No limitation DC Coil: No limitation	AC Coil: No limitation DC Coil: No limitation
	T (40 - 55 °C)	AC Coil: No limitation DC Coil: 3	AC Coil: 3 DC Coil: 3
	T (55 - 70 °C)	AC Coil: 3 DC Coil: 0	AC Coil: 1 DC Coil: 0
Rated tightening torque:	(Nm)	1.2	
Terminal screw type:		M4	
Screwdriver suggested:		PZ2	
Cable section:	rigid (mm ²)	1...10	
	flexible (mm ²)	1...10	
Weight	(g)	135	195
CONTROL COIL CHARACTERISTICS			
Control coil voltage (Uc):	(V)	8 - 230 AC 24 DC	
Min operating coil voltage:	(V)	90% Uc	
Max operating coil voltage:	(V)	110% Uc	
Frequency:	(Hz)	50/60	
Switch-on coil consumption:	(VA / W)	AC 18 / 13 DC 9 / 9	
Operation coil consumption:	(VA / W)	AC 9 / 4 DC 9 / 9	
Rated tightening torque:	(Nm)	0.6	
Terminal screw type:		M3	
Screwdriver suggested:		PZ1	
Cable section:	rigid (mm ²)	1...4	
	flexible (mm ²)	1...4	
AUXILIARY CONTACT CHARACTERISTICS ⁽³⁾			
Rated operational voltage (Ue):	(V)	250 AC	
Rated insulation voltage (Ui):	(V)	440 AC	
Rated impulse withstand voltage (Uimp):	(kV)	4	
Rated current AC-15 (In):	(A)	4 (250V)	
No. of modules:		0.5	
Power loss per pole (AC-15):	(W)	0.3	
Mechanical endurance (no. of operations):		1 x 10 ⁶	
Electrical endurance (no. of operations):		100.000	
Rated tightening torque:	(Nm)	0.8	
Terminal screw type:		M3	
Screwdriver suggested:		PZ1	
Cable section:	rigid (mm ²)	1...4	
	flexible (mm ²)	1...4	
Weight	(g)	30	

⁽¹⁾ It's suggested the use of a spacer insert (GW D6 766) between adjacent groups of relays to ensure heat dissipation.

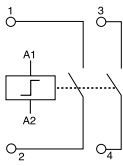
⁽²⁾ The maximum endurance of impulse for relays with AC coil at temperature > 55°C and relays with DC coil, is 1 minute

⁽³⁾ Not available for relays with AC/DC coil

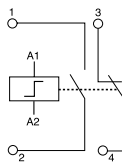
Circuit diagrams - Contactors



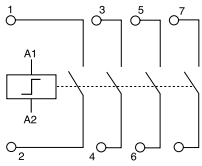
GW D6 641
GW D6 642
GW D6 643
GW D6 644



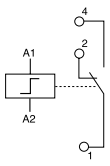
GW D6 657
GW D6 658
GW D6 659



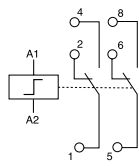
GW D6 652
GW D6 653
GW D6 654



GW D6 667
GW D6 668
GW D6 669

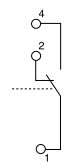


GW D6 646
GW D6 647
GW D6 648
GW D6 649
GW D6 650

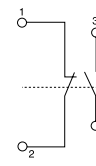


GW D6 663
GW D6 664

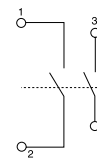
Circuit diagrams - Auxiliary contacts



GW D6 761



GW D6 762



GW D6 762



MODULAR ACCESSORIES

UTILIZATION CATEGORIES

The table below shows a brief description of each utilization category according to EN 61095. For the performance of the Gewiss contactors and relays according to the utilization category, please see the application note.






CURRENT TYPE	CATEGORY	TYPICAL APPLICATIONS	
AC 	AC-1	Resistive, non-inductive or slightly inductive loads: resistance furnaces	
	AC-2	Slip-ring motors: starting, switching off	
	AC-3	Squirrel-cage motors: starting, switching off motors during running ⁽¹⁾	
	AC-4	Squirrel-cage motors: starting, plugging, inching	
	AC-5a	Switching of discharge lamps	
	AC-5b	Switching of incandescent lamps	
	AC-6a	Switching of transformers	
	AC-6b	Switching of capacitor banks	
	AC-7a	Slightly inductive loads in household appliances and similar applications	
	AC-7b	Motor-loads for household applications ⁽¹⁾	
	AC-8a	Hermetic refrigerant compressor motor ⁽²⁾ control with manual resetting of overload releases	
	AC-8b	Hermetic refrigerant compressor motor (2) control with automatic resetting of overload releases	
	DC 	DC-1	Resistive, non-inductive or slightly inductive loads: resistance furnaces
DC-3		Shunt-motors: starting, plugging, inching Dynamic breaking of d.c. motors	
DC-5		Series-motors: starting, plugging, inching Dynamic breaking of d.c. motors	
DC-6		Switching of incandescent lamps	

⁽¹⁾ AC-3 and AC-7b categories may be used for occasional inching (jogging) or plugging for limited time periods such as machine set-up; during such limited time periods, the number of such operations should not exceed five per minute or more than ten in a 10-min period.

⁽²⁾ A hermetic refrigerant compressor motor is a combination consisting of a compressor and a motor, both of which are enclosed in the same housing, with no external shaft or shaft seals, the motor operating in the refrigerant.

APPLICATION NOTE

In general, the technical data of Gewiss contactors and relays refer to the AC-1 or AC-7a utilization category. If the type of electrical load doesn't belong to these categories, the current and as a consequence the power of the load, must be derated according the following table.

AC APPLICATION 							
Contactor type	CTR20 - CTRM 20	CTR25 - CTRM 25	CTR40	CTR63	RLM	RLB	
Utilization category:	AC-1 / AC-7a Resistive, non-inductive or slightly inductive loads 						
Rated operational current (A):	20	25	40	63	16	16	
Max operational power (kW):	230V single-phase	4	5.4	8.7	13.3	3,5	3,5
	230V three-phase	6	9	16	24	6	6
	400V three-phase	13	16	26	40	10,5	10,5
Electrical endurance (opening-closing)	200000		100000		200000	100000	
Max operating frequency (opening-closing per hour)	600						
Utilization category:	AC-3 / AC-7b Starting and switching off 						
Rated operational current (A):	NO contacts: 9 NC contacts: 6	8.5	22	30	NO contacts: 7 NO contacts: 4	5	
Max operational power (kW):	230V single-phase	NO contacts: 1.3 NC contacts: 0.75	1.3	3.7	5	NO contacts: 1,1 NO contacts: 0,55	0,37
	230V three-phase	-	2.2	5.5	8.5	1,5	1,1
	400V three-phase	-	4	11	15	3	2,2
Electrical endurance (opening-closing)	300000	500000	150000		300000	100000	
Max operating frequency (opening-closing per hour)	600						
Utilization category:	AC-5 Switching of lamps 						
Max operational power (kW):	See specific table regarding switching of lamps						
Utilization category:	AC-6b Switching of capacitor banks 						
Max operational capacity (µF):	230 V	30	36	220	330	30	80
Electrical endurance (opening-closing)	100000						
Max operating frequency (opening-closing per hour)	600						

MODULAR ACCESSORIES

GEWISS contactors and relays can be also used for DC applications. The following table shows the values of the rated operational current depending on the rated operational voltage and the utilization category.

DC APPLICATION							
Utilization category	Nr. poles	Contactor type					
		CTR 20 - CTRM 20	CTR 25 - CTRM 25	CTR 40	CTR 63	RLM	RLB
Max operating frequency (DC-1):		300 switching p er hour					
Electrical endurance (DC-1/DC-3/DC-5):		100.000					
Rated operational current (A)							
RATED OPERATIONAL VOLTAGE: 24V DC							
DC-1 (L/R ≤ 1ms)	1	20	25	40	63	16	16
	2 in series	20	25	40	63	16	16
	3 in series	-	25	40	63	16	16
	4 in series	-	25	40	63	16	16
DC-3 (L/R ≤ 2ms)	1	10	15	22	25	10	9
	2 in series	20	25	40	45	16	16
	3 in series	-	25	40	63	16	16
	4 in series	-	25	40	63	16	16
DC-5 (L/R ≤ 7,5ms)	1	10	15	20	25	10	9
	2 in series	20	25	40	45	16	16
	3 in series	-	25	40	63	16	16
	4 in series	-	25	40	63	16	16
RATED OPERATIONAL VOLTAGE: 48V DC							
DC-1 (L/R ≤ 1ms)	1	15	20	24	26	12	12
	2 in series	18	25	38	42	15	15
	3 in series	-	25	40	63	16	16
	4 in series	-	25	40	63	16	16
DC-3 (L/R ≤ 2ms)	1	5	8	10	11	5	4
	2 in series	10	16	20	22	10	9
	3 in series	-	25	40	45	16	16
	4 in series	-	25	40	63	16	16
DC-5 (L/R ≤ 7,5ms)	1	4	5	8	10	4	3
	2 in series	8	15	18	20	8	7
	3 in series	-	25	40	44	16	16
	4 in series	-	25	40	63	16	16
RATED OPERATIONAL VOLTAGE: 60V DC							
DC-1 (L/R ≤ 1ms)	1	10	15	18	20	8	8
	2 in series	15	20	32	34	12	14
	3 in series	-	25	40	60	16	16
	4 in series	-	25	40	63	16	16
DC-3 (L/R ≤ 2ms)	1	2	4	5	5	2	2
	2 in series	8	12	16	18	8	7
	3 in series	-	25	32	35	16	16
	4 in series	-	25	40	63	16	16
DC-5 (L/R ≤ 7,5ms)	1	1	3	4	5	1	1
	2 in series	6	10	14	15	6	5
	3 in series	-	20	28	30	12	15
	4 in series	-	25	40	60	16	16

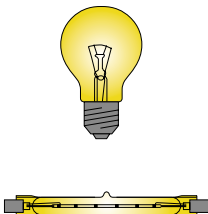
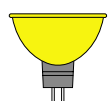
MODULAR ACCESSORIES

DC APPLICATION							
Utilization category	Nr. poles	Contactor type					
		CTR 20 - CTRM 20	CTR 25 - CTRM 25	CTR 40	CTR 63	RLM	RLB
Max operating frequency (DC-1):		300 switching per hour					
Electrical endurance (DC-1/DC-3/DC-5):		100.000					
Rated operational current (A)							
RATED OPERATIONAL VOLTAGE: 110V DC							
 DC-1 (L/R ≤ 1ms)	1	6	6	4	4	4	4
	2 in series	10	10	10	10	8	7
	3 in series	-	20	30	35	12	16
	4 in series	-	20	40	63	12	16
 DC-3 (L/R ≤ 2ms)	1	1	1,3	1,5	1,5	1	1
	2 in series	4	5,5	5	5	4	3
	3 in series	-	15	15	18	10	8
	4 in series	-	20	40	63	12	13
 DC-5 (L/R ≤ 7,5ms)	1	0,3	0,5	1	1	0,3	0,3
	2 in series	2	4	5	5	2	1,5
	3 in series	-	12	12	15	8	6
	4 in series	-	15	35	45	12	10
RATED OPERATIONAL VOLTAGE: 220V DC							
 DC-1 (L/R ≤ 1ms)	1	0,6	0,6	1,2	1,2	0,5	0,4
	2 in series	6	6	8	8	4	3
	3 in series	-	15	20	30	12	10
	4 in series	-	15	40	63	14	13
 DC-3 (L/R ≤ 2ms)	1	0,1	0,2	0,3	0,3	0,1	0,1
	2 in series	0,4	0,6	1	1	0,4	0,3
	3 in series	-	3	4	5	2	1
	4 in series	-	8	10	10	6	4
 DC-5 (L/R ≤ 7,5ms)	1	0,06	0,1	0,2	0,2	0,06	0,05
	2 in series	0,2	0,4	0,8	0,8	0,2	0,1
	3 in series	-	2	3	4	1	0,5
	4 in series	-	5	8	10	3	1,5



MODULAR ACCESSORIES

SWITCHING OF LAMPS

The following table shows the number of lamps per phase that can be commanded by each contactor and relay, according to the type of lamp and the rated power. The values refer to a rated voltage of 230 V 50 Hz.

MAX NUMBER OF LAMPS PER POLE AT 230 V, 50 HZ							
Lamp type	Power (W)	CONTACTORS				INSTALLATION RELAYS	LATCHING RELAYS
		CTR 20 CTRM 20	CTR 25 CTRM 25	CTR 40	CTR 63	RLM	RLB
INCANDESCENT AND HALOGEN							
	11	182	200	364	455	182	182
	15	133	147	267	333	133	133
	18	111	122	222	278	111	111
	20	100	110	200	250	100	100
	25	80	88	160	200	80	80
	28	71	79	143	179	71	71
	30	67	73	133	167	67	67
	33	61	67	121	152	61	61
	35	57	63	114	143	57	57
	40	50	55	100	125	50	50
	42	48	52	95	119	48	48
	46	43	48	87	109	43	43
	48	42	46	83	104	42	42
	50	40	44	80	100	40	40
	53	38	42	75	94	38	38
	57	35	39	70	88	35	35
	60	33	37	67	83	33	33
	70	29	31	57	71	29	29
	75	27	29	53	67	27	27
	77	26	29	52	65	26	26
	80	25	28	50	63	25	25
	100	20	22	40	50	20	20
	116	17	19	34	43	17	17
120	17	18	33	42	17	17	
150	13	15	27	33	13	13	
160	13	14	25	31	13	13	
200	10	11	20	25	10	10	
205	10	11	20	24	10	10	
230	9	10	17	22	9	9	
300	7	7	13	17	7	7	
400	5	6	10	13	5	5	
500	4	4	8	10	4	4	
750	3	3	5	7	3	3	
1000	2	2	4	5	2	2	
1500	1	1	3	3	1	1	
2000	1	1	2	3	1	1	
LOW-PRESSURE HALOGEN (WITH ELECTROMAGNETIC OR ELECTRONIC BALLAST)							
	10	100	120	270	430	100	100
	20	50	60	135	215	50	50
	30	33	40	90	143	33	33
	40	25	30	68	108	25	25
	50	20	24	54	86	20	20
	60	17	20	45	72	17	17
	70	14	17	39	61	14	14
	80	13	15	34	54	13	13
	90	11	13	30	48	11	11
	100	10	12	27	43	10	10
	150	7	8	18	29	7	7
	200	5	6	14	22	5	5
	300	3	4	9	14	3	3
400	3	3	7	11	3	3	

MODULAR ACCESSORIES



MAX NUMBER OF LAMPS PER POLE AT 230 V, 50 HZ													
Lamp type	Power (W)	CONTACTORS				INSTALLATION RELAYS		LATCHING RELAYS					
		CTR 20 CTRM 20	CTR 25 CTRM 25	CTR 40	CTR 63	RLM	RLB						
COMPACT FLUORESCENT WITH BALLAST INSIDE (ENERGY SAVING)													
	3	150	200	550	700	133	133						
	5	90	120	330	420	80	80						
	6	75	100	275	350	67	67						
	7	64	86	236	300	57	57						
	8	56	75	206	263	50	50						
	9	50	67	183	233	44	44						
	10	45	60	165	210	40	40						
	11	41	55	150	191	36	36						
	12	38	50	138	175	33	33						
	13	35	46	127	162	31	31						
	14	32	43	118	150	29	29						
	15	30	40	110	140	27	27						
	16	28	38	103	131	25	25						
	17	26	35	97	124	24	24						
	18	25	33	92	117	22	22						
	20	23	30	83	105	20	20						
	21	21	29	79	100	19	19						
	22	20	27	75	95	18	18						
	23	20	26	72	91	17	17						
	24	19	25	69	88	17	17						
	25	18	24	66	84	16	16						
	26	17	23	63	81	15	15						
	27	17	22	61	78	15	15						
	30	15	20	55	70	13	13						
	33	14	18	50	64	12	12						
	35	13	17	47	60	11	11						
40	11	15	41	53	10	10							
50	9	12	33	42	8	8							
70	6	9	24	30	6	6							
COMPACT FLUORESCENT WITH EXTERNAL ELECTROMAGNETIC BALLAST													
		UNCORRECTED	IN PARALLEL	UNCORRECTED	IN PARALLEL	UNCORRECTED	IN PARALLEL	UNCORRECTED	IN PARALLEL	UNCORRECTED	IN PARALLEL	UNCORRECTED	IN PARALLEL
	5	84	15 (2 µF)	106	18 (2 µF)	190	110 (2 µF)	294	165 (2 µF)	70	15 (2 µF)	70	40 (2 µF)
	2x5	60	15 (2 µF)	76	18 (2 µF)	136	110 (2 µF)	210	165 (2 µF)	50	15 (2 µF)	50	40 (2 µF)
	7	84	15 (2 µF)	106	18 (2 µF)	190	110 (2 µF)	294	165 (2 µF)	70	15 (2 µF)	70	40 (2 µF)
	2x7	60	15 (2 µF)	76	18 (2 µF)	136	110 (2 µF)	210	165 (2 µF)	50	15 (2 µF)	50	40 (2 µF)
	9	70	15 (2 µF)	88	18 (2 µF)	158	110 (2 µF)	245	165 (2 µF)	58	15 (2 µF)	58	40 (2 µF)
	2x9	53	15 (2 µF)	66	18 (2 µF)	119	110 (2 µF)	184	165 (2 µF)	44	15 (2 µF)	44	40 (2 µF)
	10	60	15 (2 µF)	76	18 (2 µF)	136	110 (2 µF)	210	165 (2 µF)	50	15 (2 µF)	50	40 (2 µF)
	11	53	15 (2 µF)	66	18 (2 µF)	119	110 (2 µF)	184	165 (2 µF)	44	15 (2 µF)	44	40 (2 µF)
	13	53	15 (2 µF)	66	18 (2 µF)	119	110 (2 µF)	184	165 (2 µF)	44	15 (2 µF)	44	40 (2 µF)
	16	42	15 (2 µF)	53	18 (2 µF)	95	110 (2 µF)	147	165 (2 µF)	35	15 (2 µF)	35	40 (2 µF)
	18	35	7 (4,5 µF)	44	8 (4,5 µF)	79	49 (4,5 µF)	123	73 (4,5 µF)	29	7 (4,5 µF)	29	18 (4,5 µF)
	2x18	20	7,5 (4 µF)	25	9 (4 µF)	45	55 (4 µF)	70	82,5 (4 µF)	17	7,5 (4 µF)	17	20 (4 µF)
	21	35	10 (3 µF)	44	12 (3 µF)	79	73 (3 µF)	123	110 (3 µF)	29	10 (3 µF)	29	27 (3 µF)
	22	21	7 (4,5 µF)	27	8 (4,5 µF)	48	49 (4,5 µF)	74	73 (4,5 µF)	18	7 (4,5 µF)	18	18 (4,5 µF)
	24	28	7 (4,5 µF)	35	8 (4,5 µF)	63	49 (4,5 µF)	98	73 (4,5 µF)	23	7 (4,5 µF)	23	18 (4,5 µF)
	26	28	7 (4,5 µF)	35	8 (4,5 µF)	63	49 (4,5 µF)	98	73 (4,5 µF)	23	7 (4,5 µF)	23	18 (4,5 µF)
	28	28	9 (4,5 µF)	35	10 (3,5 µF)	63	63 (3,5 µF)	98	94 (3,5 µF)	23	9 (3,5 µF)	23	23 (3,5 µF)
	32	19	7,5 (4 µF)	24	9 (4 µF)	43	55 (4 µF)	67	83 (4 µF)	16	7,5 (4 µF)	16	20 (4 µF)
	36	20	7 (4,5 µF)	25	8 (4,5 µF)	45	49 (4,5 µF)	70	73 (4,5 µF)	17	7 (4,5 µF)	17	18 (4,5 µF)
	38	20	7 (4,5 µF)	25	8 (4,5 µF)	45	49 (4,5 µF)	70	73 (4,5 µF)	17	7 (4,5 µF)	17	18 (4,5 µF)
	40	20	7 (4,5 µF)	25	8 (4,5 µF)	45	49 (4,5 µF)	70	73 (4,5 µF)	17	7 (4,5 µF)	17	18 (4,5 µF)
	58	13	4 (7 µF)	17	5 (7 µF)	30	31 (7 µF)	46	47 (7 µF)	11	4 (7 µF)	11	11 (7 µF)

MODULAR ACCESSORIES



MAX NUMBER OF LAMPS PER POLE AT 230 V, 50 HZ							
Lamp type	Power (W)	CONTACTORS				INSTALLATION RELAYS	LATCHING RELAYS
		CTR 20 CTRM 20	CTR 25 CTRM 25	CTR 40	CTR 63	RLM	RLB
COMPACT FLUORESCENT WITH EXTERNAL ELECTRONIC BALLAST							
	5	75	105	300	417	67	100
	7	56	79	225	313	50	75
	9	45	63	180	250	40	60
	2x9	25	35	100	139	22	33
	10	45	63	180	250	40	60
	2x10	25	35	100	139	22	33
	11	32	45	129	179	29	43
	2x11	19	26	75	104	17	25
	13	32	45	129	179	29	43
	2x13	19	26	75	104	17	25
	14	28	39	113	156	25	38
	2x14	15	21	60	83	13	20
	16	32	45	129	179	29	43
	17	23	32	90	125	20	30
	2x17	13	18	50	69	11	17
	18	25	35	100	139	22	33
	2x18	13	19	53	74	12	18
	22	17	24	69	96	15	23
	2x22	11	15	43	60	10	14
	24	19	26	75	104	17	25
	2x24	10	14	39	54	9	13
	3x24	7	10	28	39	6	9
	4x24	5	7	21	29	5	7
	26	19	26	75	104	17	25
	2x26	9	13	38	52	8	13
	28	16	23	64	89	14	21
	32	14	20	56	78	13	19
	2x32	7	10	29	40	6	10
	36	14	20	56	78	13	19
	2x36	7	10	29	40	6	10
	38	13	19	53	74	12	18
	2x38	6	9	26	36	6	9
	40	11	16	45	63	10	15
	2x40	6	8	23	32	5	8
	42	11	16	45	63	10	15
	2x42	5	8	22	30	5	7
	55	8	12	33	46	7	11
	2x55	4	6	17	24	4	6
	57	8	11	32	45	7	11
	2x57	4	6	16	22	4	5
	60	7	10	29	40	6	10
	2x60	4	5	15	20	3	5
	70	7	9	26	37	6	9
	80	6	8	24	33	5	8
	2x80	3	4	12	16	3	4
	85	5	8	21	30	5	7
	100	5	7	20	27	4	7
	120	4	5	16	22	3	5
	150	3	5	13	18	3	4




MODULAR ACCESSORIES

MAX NUMBER OF LAMPS PER POLE AT 230 V, 50 HZ													
Lamp type	Power (W)	CONTACTORS								INSTALLATION RELAYS		LATCHING RELAYS	
		CTR 20 CTRM 20		CTR 25 CTRM 25		CTR 40		CTR 63		RLM		RLB	
COMPACT FLUORESCENT WITH EXTERNAL ELECTROMAGNETIC BALLAST													
		UNCORRECTED	IN PARALLEL	UNCORRECTED	IN PARALLEL	UNCORRECTED	IN PARALLEL	UNCORRECTED	IN PARALLEL	UNCORRECTED	IN PARALLEL	UNCORRECTED	IN PARALLEL
	4	52	15 (2 µF)	66	18 (2 µF)	118	110 (2 µF)	188	165 (2 µF)	52	15 (2 µF)	94	40 (2 µF)
	6	55	15 (2 µF)	70	18 (2 µF)	125	110 (2 µF)	200	165 (2 µF)	55	15 (2 µF)	100	40 (2 µF)
	8	59	15 (2 µF)	75	18 (2 µF)	133	110 (2 µF)	213	165 (2 µF)	59	15 (2 µF)	107	40 (2 µF)
	10	52	15 (2 µF)	66	18 (2 µF)	118	110 (2 µF)	188	165 (2 µF)	52	15 (2 µF)	94	40 (2 µF)
	11	55	15 (2 µF)	70	18 (2 µF)	125	110 (2 µF)	200	165 (2 µF)	55	15 (2 µF)	100	40 (2 µF)
	13	52	15 (2 µF)	66	18 (2 µF)	118	110 (2 µF)	188	165 (2 µF)	52	15 (2 µF)	94	40 (2 µF)
	14	22	7 (4,5 µF)	28	8 (4,5 µF)	50	49 (4,5 µF)	80	73 (4,5 µF)	22	7 (4,5 µF)	40	18 (4,5 µF)
	15	27	7 (4,5 µF)	34	8 (4,5 µF)	61	49 (4,5 µF)	97	73 (4,5 µF)	27	7 (4,5 µF)	48	18 (4,5 µF)
	16	44	12 (2,5 µF)	56	14 (2,5 µF)	100	88 (2,5 µF)	160	132 (2,5 µF)	44	12 (2,5 µF)	80	32 (2,5 µF)
	18	24	7 (4,5 µF)	30	8 (4,5 µF)	54	49 (4,5 µF)	86	73 (4,5 µF)	24	7 (4,5 µF)	43	18 (4,5 µF)
	20	23	7 (4,5 µF)	29	8 (4,5 µF)	53	49 (4,5 µF)	84	73 (4,5 µF)	23	7 (4,5 µF)	42	18 (4,5 µF)
	22	24	6 (5 µF)	30	7 (5 µF)	54	44 (5 µF)	86	66 (5 µF)	24	6 (5 µF)	43	16 (5 µF)
	25	30	9 (3,5 µF)	39	10 (3,5 µF)	69	63 (3,5 µF)	110	94 (3,5 µF)	30	9 (3,5 µF)	55	23 (3,5 µF)
	30	24	7 (4,5 µF)	30	8 (4,5 µF)	54	49 (4,5 µF)	86	73 (4,5 µF)	24	7 (4,5 µF)	43	18 (4,5 µF)
	32	20	6 (5 µF)	26	7 (5 µF)	47	44 (5 µF)	74	66 (5 µF)	20	6 (5 µF)	37	16 (5 µF)
	36	20	7 (4,5 µF)	26	8 (4,5 µF)	47	49 (4,5 µF)	74	73 (4,5 µF)	20	7 (4,5 µF)	37	18 (4,5 µF)
	38	20	7 (4,5 µF)	26	8 (4,5 µF)	47	49 (4,5 µF)	74	73 (4,5 µF)	20	7 (4,5 µF)	37	18 (4,5 µF)
	40	20	7 (4,5 µF)	26	8 (4,5 µF)	47	49 (4,5 µF)	74	73 (4,5 µF)	20	7 (4,5 µF)	37	18 (4,5 µF)
	58	13	4 (7 µF)	17	5 (7 µF)	30	31 (7 µF)	48	47 (7 µF)	13	4 (7 µF)	24	11 (7 µF)
	65	13	4 (7 µF)	17	5 (7 µF)	30	31 (7 µF)	48	47 (7 µF)	13	4 (7 µF)	24	11 (7 µF)
75	13	5 (6 µF)	17	6 (6 µF)	30	37 (6 µF)	48	55 (6 µF)	13	5 (6 µF)	24	13 (6 µF)	
80	11	4 (7 µF)	14	5 (7 µF)	25	31 (7 µF)	40	47 (7 µF)	11	4 (7 µF)	20	11 (7 µF)	
85	11	4 (8 µF)	14	5 (8 µF)	25	28 (8 µF)	40	41 (8 µF)	11	4 (8 µF)	20	10 (8 µF)	
100	9	3 (10 µF)	12	4 (10 µF)	21	22 (10 µF)	33	33 (10 µF)	9	3 (10 µF)	17	8 (10 µF)	
125	9	2 (18 µF)	12	2 (18 µF)	21	12 (18 µF)	34	18 (18 µF)	9	2 (18 µF)	17	4 (18 µF)	
SERIES CIRCUIT FOR TWO FLUORESCENT LAMPS WITH EXTERNAL ELECTROMAGNETIC BALLAST													
		UNCORRECTED	IN PARALLEL	UNCORRECTED	IN PARALLEL	UNCORRECTED	IN PARALLEL	UNCORRECTED	IN PARALLEL	UNCORRECTED	IN PARALLEL	UNCORRECTED	IN PARALLEL
	2x4	26	15 (2 µF)	33	18 (2 µF)	59	110 (2 µF)	94	165 (2 µF)	26	15 (2 µF)	47	40 (2 µF)
	2x6	28	15 (2 µF)	35	18 (2 µF)	63	110 (2 µF)	100	165 (2 µF)	28	15 (2 µF)	50	40 (2 µF)
	2x8	29	15 (2 µF)	37	18 (2 µF)	67	110 (2 µF)	107	165 (2 µF)	29	15 (2 µF)	53	40 (2 µF)
	2x10	26	15 (2 µF)	33	18 (2 µF)	59	110 (2 µF)	94	165 (2 µF)	26	15 (2 µF)	47	40 (2 µF)
	2x11	28	15 (2 µF)	35	18 (2 µF)	63	110 (2 µF)	100	165 (2 µF)	28	15 (2 µF)	50	40 (2 µF)
	2x13	26	15 (2 µF)	33	18 (2 µF)	59	110 (2 µF)	94	165 (2 µF)	26	15 (2 µF)	47	40 (2 µF)
	2x14	11	7 (4,5 µF)	14	8 (4,5 µF)	25	49 (4,5 µF)	40	73 (4,5 µF)	11	7 (4,5 µF)	20	18 (4,5 µF)
	2x15	13	7 (4,5 µF)	17	8 (4,5 µF)	30	49 (4,5 µF)	48	73 (4,5 µF)	13	7 (4,5 µF)	24	18 (4,5 µF)
	2x16	22	12 (2,5 µF)	28	14 (2,5 µF)	50	88 (2,5 µF)	80	132 (2,5 µF)	22	12 (2,5 µF)	40	32 (2,5 µF)
	2x18	12	7 (4,5 µF)	15	8 (4,5 µF)	27	49 (4,5 µF)	43	73 (4,5 µF)	12	7 (4,5 µF)	22	18 (4,5 µF)
	2x20	12	7 (4,5 µF)	15	8 (4,5 µF)	26	49 (4,5 µF)	42	73 (4,5 µF)	12	7 (4,5 µF)	21	18 (4,5 µF)
	2x22	12	6 (5 µF)	15	7,2 (5 µF)	27	44 (5 µF)	43	66 (5 µF)	12	6 (5 µF)	22	16 (5 µF)
	2x25	15	9 (3,5 µF)	19	10 (3,5 µF)	34	63 (3,5 µF)	55	94 (3,5 µF)	15	9 (3,5 µF)	28	23 (3,5 µF)
	2x30	12	7 (4,5 µF)	15	8 (4,5 µF)	27	49 (4,5 µF)	43	73 (4,5 µF)	12	7 (4,5 µF)	22	18 (4,5 µF)
	2x32	10	6 (5 µF)	13	7 (5 µF)	23	44 (5 µF)	37	66 (5 µF)	10	6 (5 µF)	19	16 (5 µF)
	2x36	10	7 (4,5 µF)	13	8 (4,5 µF)	23	49 (4,5 µF)	37	73 (4,5 µF)	10	7 (4,5 µF)	19	18 (4,5 µF)
	2x38	10	7 (4,5 µF)	13	8 (4,5 µF)	23	49 (4,5 µF)	37	73 (4,5 µF)	10	7 (4,5 µF)	19	18 (4,5 µF)
	2x40	10	7 (4,5 µF)	13	8 (4,5 µF)	23	49 (4,5 µF)	37	73 (4,5 µF)	10	7 (4,5 µF)	19	18 (4,5 µF)
	2x58	7	4 (7 µF)	8	5 (7 µF)	15	31 (7 µF)	24	47 (7 µF)	7	4 (7 µF)	12	11 (7 µF)
	2x65	7	4 (7 µF)	8	5 (7 µF)	15	31 (7 µF)	24	47 (7 µF)	7	4 (7 µF)	12	11 (7 µF)
2x75	7	5 (6 µF)	8	6 (6 µF)	15	37 (6 µF)	24	55 (6 µF)	7	5 (6 µF)	12	13 (6 µF)	
2x80	6	4 (7 µF)	7	5 (7 µF)	13	31 (7 µF)	20	47 (7 µF)	6	4 (7 µF)	10	11 (7 µF)	
2x85	6	4 (8 µF)	7	5 (8 µF)	13	28 (8 µF)	20	41 (8 µF)	6	4 (8 µF)	10	10 (8 µF)	
2x100	5	3 (10 µF)	6	4 (10 µF)	10	22 (10 µF)	17	33 (10 µF)	5	3 (10 µF)	8	8 (10 µF)	
2x125	5	2 (18 µF)	6	2 (18 µF)	11	12 (18 µF)	17	18 (18 µF)	5	2 (18 µF)	9	4 (18 µF)	

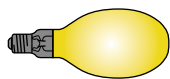
MODULAR ACCESSORIES

MAX NUMBER OF LAMPS PER POLE AT 230 V, 50 HZ							
Lamp type	Power (W)	CONTACTORS				INSTALLATION RELAYS	LATCHING RELAYS
		CTR 20 CTRM 20	CTR 25 CTRM 25	CTR 40	CTR 63	RLM	RLB
LEAD-LAG CIRCUIT FOR FLUORESCENT LAMPS WITH EXTERNAL ELECTROMAGNETIC BALLASTS - SERIES CORRECTED							
	2x18	31 (2,7 µF)	40 (2,7 µF)	100 (2,7 µF)	150 (2,7 µF)	31 (2,7 µF)	62 (2,7 µF)
	2x36	17 (4,5 µF)	22 (4,5 µF)	54 (4,5 µF)	81 (4,5 µF)	17 (4,5 µF)	33 (4,5 µF)
	2x40	17 (4,5 µF)	22 (4,5 µF)	54 (4,5 µF)	81 (4,5 µF)	17 (4,5 µF)	33 (4,5 µF)
	2x58	10 (7 µF)	13 (7 µF)	54 (7 µF)	50 (7 µF)	10 (7 µF)	21 (7 µF)
	2x65	10 (7 µF)	13 (7 µF)	33 (7 µF)	50 (7 µF)	10 (7 µF)	21 (7 µF)
	2x80	8 (9 µF)	11 (9 µF)	27 (9 µF)	41 (9 µF)	8 (9 µF)	17 (9 µF)
	2x85	8 (9 µF)	11 (9 µF)	27 (9 µF)	41 (9 µF)	8 (9 µF)	17 (9 µF)
	2x125	7 (18 µF)	9 (18 µF)	22 (18 µF)	33 (18 µF)	6 (18 µF)	13 (18 µF)
FLUORESCENT WITH ELECTRONIC EXTERNAL BALLAST							
	4	117	158	417	600	67	100
	6	106	144	379	545	61	91
	2x6	58	79	208	300	33	50
	8	88	119	313	450	50	75
	2x8	44	59	156	225	25	38
	10	70	95	250	360	40	60
	2x10	39	53	139	200	22	33
	11	58	79	208	300	33	50
	13	50	68	179	257	29	43
	14	44	59	156	225	25	38
	2x14	23	32	83	120	13	20
	3x14	17	23	60	86	10	14
	4x14	13	17	45	64	7	11
	15	44	59	156	225	25	38
	2x15	27	37	96	138	15	23
	16	50	68	179	257	29	43
	2x16	25	34	89	129	14	21
	3x16	18	24	63	90	10	15
	4x16	13	17	45	64	7	11
	18	39	53	139	200	22	33
	2x18	21	28	74	106	12	18
	3x18	15	20	52	75	8	13
	4x18	11	15	40	58	6	10
	19	32	43	114	164	18	27
	2x19	16	22	57	82	9	14
	20	32	43	114	164	18	27
	2x20	16	22	57	82	9	14
	21	32	43	114	164	18	27
	2x21	16	22	57	82	9	14
	22	32	43	114	164	18	27
	2x22	15	21	54	78	9	13
	24	29	40	104	150	17	25
	2x24	16	22	57	82	9	14
	3x24	11	14	38	55	6	9
	4x24	8	11	29	42	5	7
25	23	32	83	120	13	20	
2x25	13	17	45	64	7	11	
28	25	34	89	129	14	21	
2x28	13	18	46	67	7	11	
30	25	34	89	129	14	21	
2x30	13	18	46	67	7	11	
32	21	28	74	106	12	18	
2x32	10	14	36	51	6	9	
34	21	28	74	106	12	18	
2x34	10	14	36	51	6	9	
35	21	28	74	106	12	18	

MAX NUMBER OF LAMPS PER POLE AT 230 V, 50 HZ

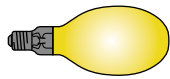
Lamp type	Power (W)	CONTACTORS				INSTALLATION RELAYS	LATCHING RELAYS
		CTR 20 CTRM 20	CTR 25 CTRM 25	CTR 40	CTR 63	RLM	RLB
	2x35	10	14	37	53	6	9
	36	22	30	78	113	13	19
	2x36	11	15	40	58	6	10
	3x36	8	10	27	39	4	7
	38	23	32	83	120	13	20
	2x38	11	15	40	58	6	10
	39	18	25	66	95	11	16
	2x39	10	13	35	50	6	8
	40	17	23	60	86	10	14
	2x40	8	11	30	43	5	7
	45	15	20	52	75	8	13
	2x45	8	10	27	39	4	7
	49	15	20	52	75	8	13
	2x49	8	10	27	39	4	7
	50	14	19	50	72	8	12
	2x50	7	10	26	38	4	6
	51	16	22	57	82	9	14
	2x51	8	11	30	43	5	7
	54	13	18	48	69	8	12
	2x54	7	9	24	35	4	6
	55	13	17	45	64	7	11
	2x55	6	9	23	33	4	5
	58	14	19	50	72	8	12
	2x58	7	10	26	38	4	6
	65	14	19	50	72	8	12
	2x65	7	10	26	38	4	6
	70	12	16	42	60	7	10
	2x70	6	8	22	32	4	5
	73	9	13	33	47	5	8
	2x73	5	7	18	26	3	4
	80	9	12	31	45	5	8
	2x80	5	6	16	24	3	4

HIGH-PRESSURE MERCURY-VAPOR WITH EXTERNAL ELECTROMAGNETIC BALLAST



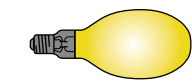
	UNCORRECTED	IN PARALLEL	UNCORRECTED	IN PARALLEL	UNCORRECTED	IN PARALLEL	UNCORRECTED	IN PARALLEL	UNCORRECTED	IN PARALLEL	UNCORRECTED	IN PARALLEL
50	14	4 (7 µF)	18	5 (7 µF)	38	31 (7 µF)	55	47 (7 µF)	14	4 (7 µF)	17	11 (7 µF)
80	10	4 (8 µF)	13	5 (8 µF)	29	27 (8 µF)	42	41 (8 µF)	10	4 (8 µF)	13	10 (8 µF)
125	7	3 (10 µF)	9	4 (10 µF)	20	22 (10 µF)	29	33 (10 µF)	7	3 (10 µF)	8	8 (10 µF)
250	4	1 (18 µF)	5	2 (18 µF)	10	12 (18 µF)	15	18 (18 µF)	4	1 (18 µF)	5	4 (18 µF)
400	2	1 (25 µF)	3	1 (25 µF)	7	9 (25 µF)	10	13 (25 µF)	2	1 (25 µF)	3	3 (25 µF)
700	1	0 (40 µF)	2	0 (40 µF)	4	5 (40 µF)	6	7 (40 µF)	1	0 (40 µF)	2	2 (40 µF)
1000	1	0 (60 µF)	1	0 (60 µF)	3	4 (60 µF)	4	5 (60 µF)	1	0 (60 µF)	1	1 (60 µF)

HIGH-PRESSURE MERCURY-VAPOR WITHOUT BALLAST



160	11		12		22		28		10		10	
250	7		8		15		18		6		6	
500	4		4		7		9		3		3	

METAL HALIDE WITH EXTERNAL ELECTROMAGNETIC BALLAST



	UNCORRECTED	IN PARALLEL	UNCORRECTED	IN PARALLEL	UNCORRECTED	IN PARALLEL	UNCORRECTED	IN PARALLEL	UNCORRECTED	IN PARALLEL	UNCORRECTED	IN PARALLEL
35	18	5 (6 µF)	22	6 (6 µF)	43	36 (6 µF)	60	50 (6 µF)	16	5 (6 µF)	16	13 (6 µF)
70	10	2 (12 µF)	12	3 (12 µF)	23	18 (12 µF)	32	25 (12 µF)	8	2 (12 µF)	8	7 (12 µF)
100	8	2 (12 µF)	10	3 (12 µF)	19	18 (12 µF)	26	25 (12 µF)	7	2 (12 µF)	7	7 (12 µF)
150	5	1 (20 µF)	7	1 (20 µF)	12	11 (20 µF)	18	15 (20 µF)	4	1 (20 µF)	4	4 (20 µF)
250	3	0 (32 µF)	4	1 (32 µF)	7	6 (32 µF)	10	9 (32 µF)	3	0 (32 µF)	3	3 (32 µF)
400	3	0 (45 µF)	3	0 (45 µF)	6	5 (45 µF)	9	7 (45 µF)	2	0 (45 µF)	2	2 (45 µF)
600	1	0 (65 µF)	2	0 (65 µF)	3	3 (65 µF)	4	5 (65 µF)	1	0 (65 µF)	1	1 (65 µF)
1000	1	0 (85 µF)	1	0 (85 µF)	2	2 (85 µF)	3	3 (85 µF)	1	0 (85 µF)	1	0 (85 µF)
2000	0	0 (125 µF)	0	0 (125 µF)	1	1 (125 µF)	2	2 (125 µF)	0	0 (125 µF)	0	0 (125 µF)

MODULAR ACCESSORIES

MAX NUMBER OF LAMPS PER POLE AT 230 V, 50 HZ													
Lamp type	Power (W)	CONTACTORS				INSTALLATION RELAYS	LATCHING RELAYS						
		CTR 20 CTRM 20	CTR 25 CTRM 25	CTR 40	CTR 63	RLM	RLB						
METAL HALIDE WITH EXTERNAL ELECTRONIC BALLAST													
	20	18	25	51	64	18	27						
	35	10	13	27	33	10	14						
	2x35	5	7	15	18	5	8						
	50	7	10	19	24	7	10						
	70	5	7	15	18	5	8						
	2x70	3	4	8	10	3	4						
	100	4	5	10	13	4	5						
	150	3	4	8	10	3	4						
	250	2	2	4	5	2	2						
	400	1	1	2	3	1	1						
	1000	0	0	1	1	0	0						
2000	0	0	0	1	0	0							
HIGH-PRESSURE SODIUM-VAPOR WITH EXTERNAL ELECTROMAGNETIC BALLAST													
		UNCORRECTED	IN PARALLEL	UNCORRECTED	IN PARALLEL	UNCORRECTED	IN PARALLEL	UNCORRECTED	IN PARALLEL	UNCORRECTED	IN PARALLEL	UNCORRECTED	IN PARALLEL
	35	15	5 (6 µF)	18	6 (6 µF)	55	36 (6 µF)	70	55 (6 µF)	15	5 (6 µF)	25	13 (6 µF)
	50	11	3 (8 µF)	12	4 (8 µF)	35	27 (8 µF)	45	41 (8 µF)	11	3 (8 µF)	16	10 (8 µF)
	70	9	2 (12 µF)	10	3 (12 µF)	30	18 (12 µF)	35	27 (12 µF)	9	2 (12 µF)	13	7 (12 µF)
	100	7	2 (12 µF)	8	3 (12 µF)	25	18 (12 µF)	30	27 (12 µF)	7	2 (12 µF)	11	7 (12 µF)
	150	5	1 (20 µF)	6	1 (20 µF)	17	11 (20 µF)	22	16 (20 µF)	5	1 (20 µF)	7	4 (20 µF)
	250	3	0 (32 µF)	4	1 (32 µF)	10	6 (32 µF)	13	10 (32 µF)	3	0 (32 µF)	4	3 (32 µF)
	400	2	0 (45 µF)	2	0 (45 µF)	6	4 (45 µF)	8	6 (45 µF)	2	0 (45 µF)	3	2 (45 µF)
	600	1	0 (65 µF)	1	0 (65 µF)	4	3 (65 µF)	5	5 (65 µF)	1	0 (65 µF)	2	1 (65 µF)
	1000	0	0 (100 µF)	1	0 (100 µF)	3	2 (100 µF)	3	3 (100 µF)	0	0 (100 µF)	1	0 (100 µF)
HIGH-PRESSURE SODIUM-VAPOR WITH EXTERNAL ELECTRONIC BALLAST													
	35	10	13	27	33	10	14						
	50	8	11	22	28	8	12						
	70	5	7	15	18	5	8						
	100	4	5	10	13	4	5						
	150	3	4	8	10	3	4						
	250	2	2	4	5	2	2						
	400	1	1	3	4	1	2						
	600	0	0	1	2	0	1						
	1000	0	0	1	1	0	0						
LOW-PRESSURE SODIUM-VAPOR WITH EXTERNAL ELECTROMAGNETIC BALLAST													
		UNCORRECTED	IN PARALLEL	UNCORRECTED	IN PARALLEL	UNCORRECTED	IN PARALLEL	UNCORRECTED	IN PARALLEL	UNCORRECTED	IN PARALLEL	UNCORRECTED	IN PARALLEL
	18	22	6 (5 µF)	27	7 (5 µF)	71	44 (5 µF)	90	66 (5 µF)	22	6 (5 µF)	25	16 (5 µF)
	35	7	1 (20 µF)	9	1 (20 µF)	23	11 (20 µF)	30	16 (20 µF)	7	1 (20 µF)	15	4 (20 µF)
	55	7	1 (20 µF)	9	1 (20 µF)	23	11 (20 µF)	30	16 (20 µF)	7	1 (20 µF)	15	4 (20 µF)
	90	4	1 (26 µF)	5	1 (26 µF)	14	8 (26 µF)	19	12 (26 µF)	4	1 (26 µF)	10	3 (26 µF)
	135	3	0 (40 µF)	4	0 (40 µF)	10	4 (40 µF)	13	7 (40 µF)	3	0 (40 µF)	10	2 (40 µF)
	180	3	0 (40 µF)	4	0 (40 µF)	10	5 (40 µF)	13	8 (40 µF)	3	0 (40 µF)	10	2 (40 µF)
LOW-PRESSURE SODIUM-VAPOR WITH EXTERNAL ELECTRONIC BALLAST													
	35	13	18	35	44	13	19						
	55	8	11	22	28	8	12						
LED LAMPS*													
	-	N = 2,4 / In	N = 3,8 / In	N = 11 / In	N = 18 / In	N = 1,5 / In	N = 2 / In						

* N = number of lamps
In = rated current of LED lamp

GUIDE - HOW TO MAKE SIMULTANEOUS COMMAND OF MORE GROUPS OF LATCHING RELAYS

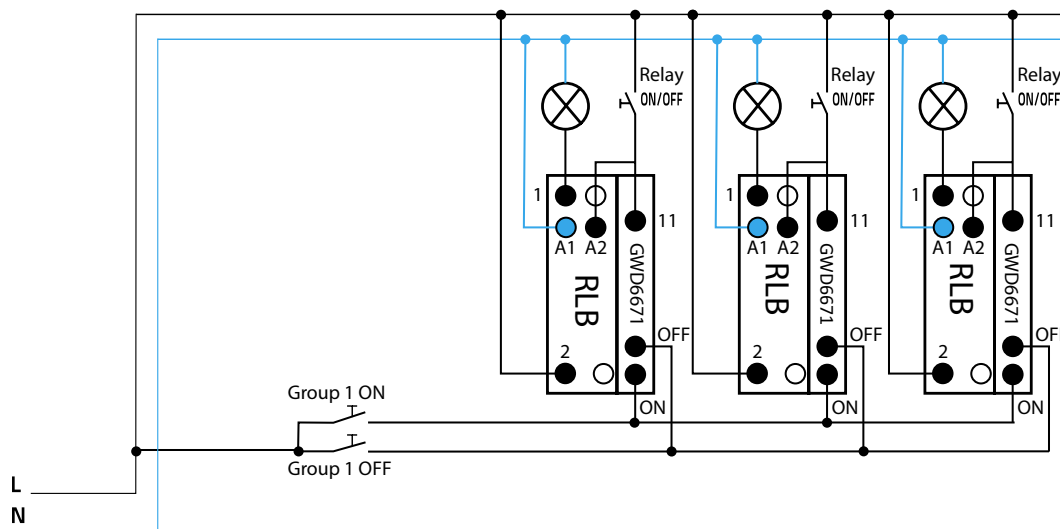
ACCESSORIES FOR CENTRAL COMMAND AND GROUP COMMAND			
Code:		GWD6671 ⁽¹⁾	GWD6672
Type of accessory:		It must be mounted on relay	
Rated operating voltage (Ue):	(V)	250 AC	
Rated insulation voltage (Ui):	(V)	440 AC	
No. of modules:		0.5	
Mechanical endurance (no. of operations):		1 x 10 ⁶	-
Rated tightening torque:	(Nm)	0.8	
Terminal screw type		M3	
Screwdriver suggested:		PZ1	
Cable section:	rigid (mm ²)	1...4	
	flexible (mm ²)	1...4	
Weight	(g)	30	

⁽¹⁾ Not available for relay with DC coil

The following codes are used to make a centralized command of one or more groups of relays

Code	Type	Number	Description
GW D6 671	Accessory that must be mounted on latching relay	1 for each latching relay of the group	Carry out the ON/OFF command of two or more relays from one point, independently from the status of each relay.
GW D6 672	Stand-alone accessory	1 for each group of relay	Carry out the simultaneously command of two or more groups of centralized relays independently from the status of each relay.

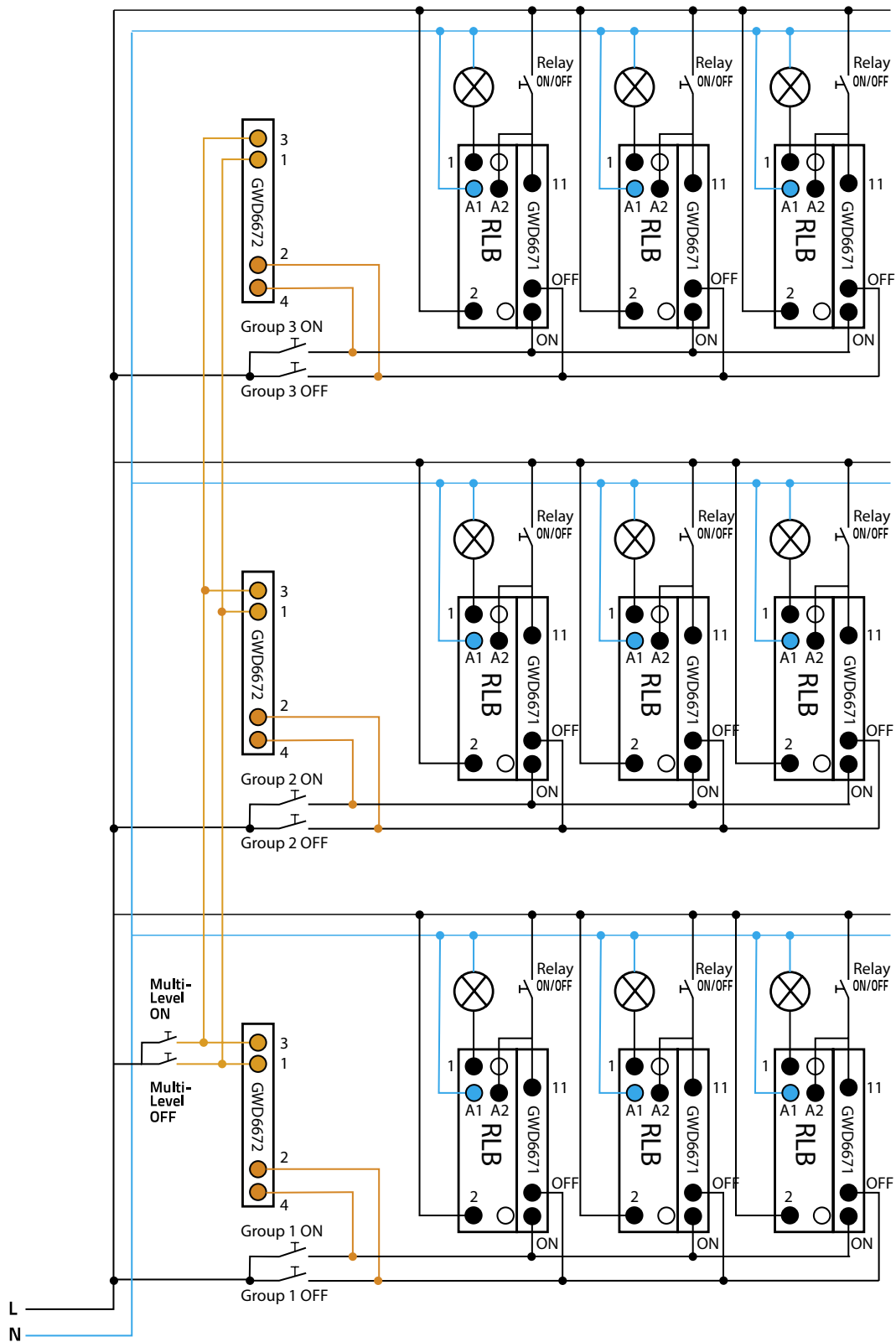
GW D6 671 - CENTRALIZED COMMAND OF 1 GROUP OF RELAY



Legend:

- **Push-button relay:** local command of relay
- **Push-button of group:** centralized command of all group's relays, independently from the status of each relay

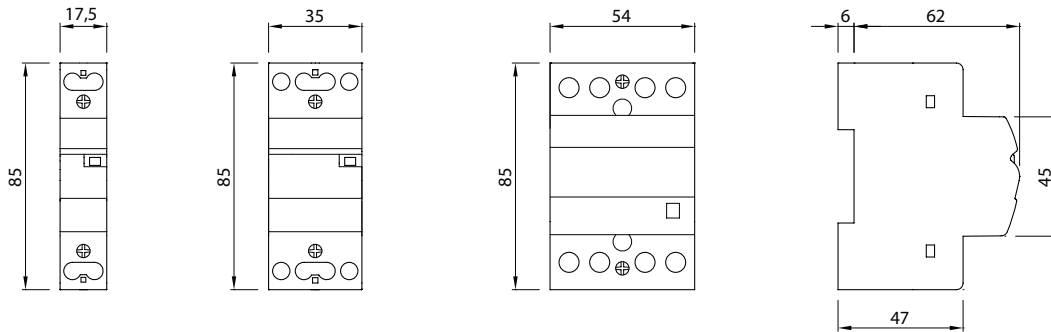
GW D6 672 - CENTRALIZED COMMAND OF MORE GROUPS OF RELAYS



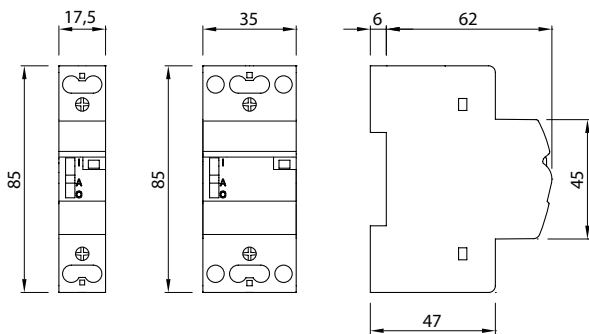
Legend:

- **Push-button relay:** local command of relay
- **Push-button of group:** centralized command of all group's relays, independently from the status of each relay
- **Multilevel Push-button:** centralized command for all relays of all the groups, independently from the status of each relay

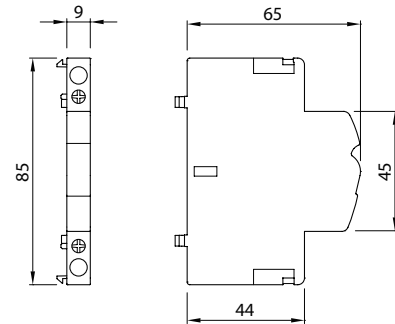
CONTACTORS



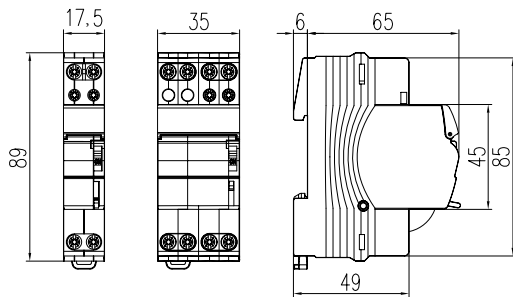
MANUAL CONTROL CONTACTORS AND INSTALLATION RELAYS



AUXILIARY CONTACTS FOR CONTACTORS, INSTALLATION RELAYS AND LATCHING RELAYS



LATCHING RELAYS



BIOCOMFORT

