

LOAD BREAK SWITCH

A switch capable of making, carrying and breaking currents under normal circuits conditions and which, in the open position, complies with the isolating requirements specified for a disconnector

SM LOAD BREAK SWITCHES RANGE

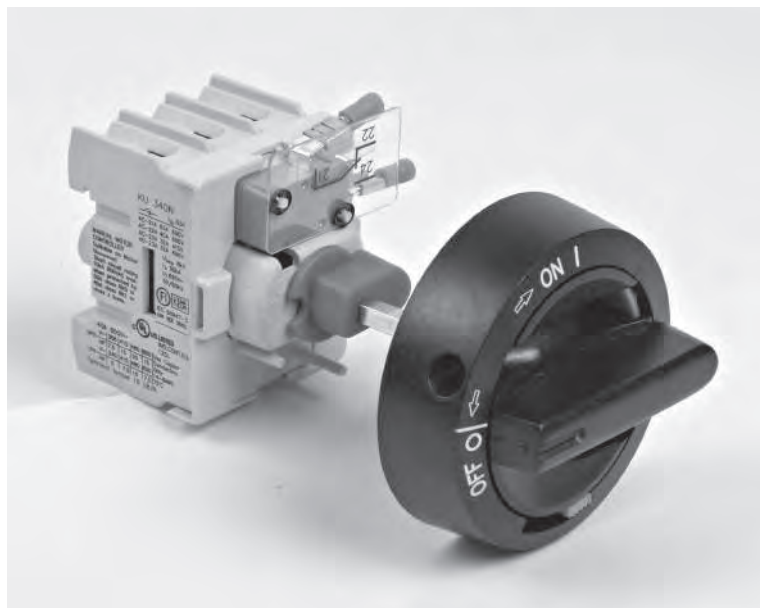
The SM-rotary switch series covers the range from 16 up to 125Amp. The load break switches are available as 3-, 4-, 6- and 8-pole and 2-pole upon request.

The 6- and 8-pole versions consist of two 3 or 4 pole SM load break switches connected through a parallel connection kit

MAIN PROPERTIES

Technology developed for load break switches uses silver contact in order to grant safe and durable performance. Comprehensive range of accessories (to be purchased separately) consists of the door interlock handle, the extension shaft for door interlock handle, the direct handle, the auxiliary contacts, the door mounting kit, the parallel kit, the change-over and the spreaders

- Compact size saving space
- DIN-rail mounting or screw fixing base (series for SMB, optional for SM, SMF and SMK)
- Double break with silver rivets
- 12,5 mm air distance between contacts in open-position
- Neutral (at full current) contacts make earlier and open later than the phase contacts
- Position indicator
- Snap-on auxiliary contacts
- Availability of door interlock handles
- Lockable handles (IP65)

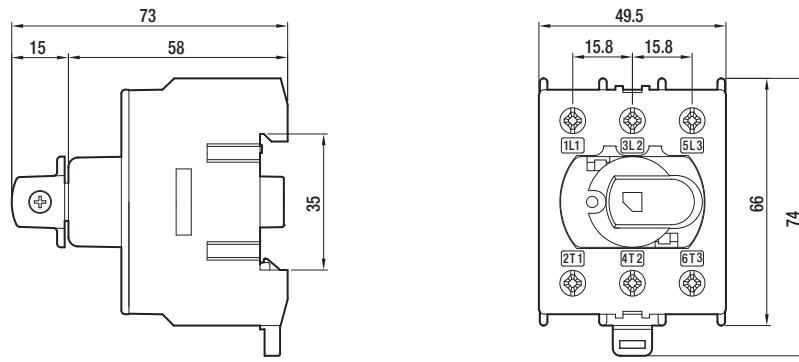


TECHNICAL DATAS LOAD BREAK SWITCHES SM 16-125Amp 3 and 4 poles

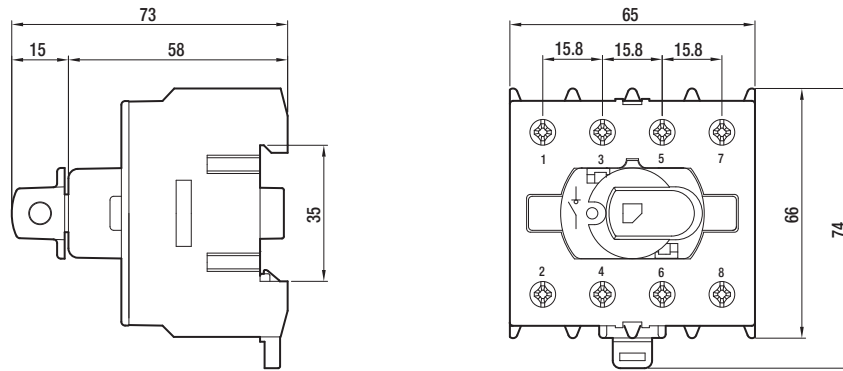
SEZIONATORI / LOAD BREAK SWITCHES		16A	25A	40A	63A	80A	125A	
		SM3-4	SM3-4	SM3-4	SM3-4	SM3-4	SM3-4	
Tensione nominale di isolamento Rated insulation voltage	Ui [V]	690	690	690	690	690	690	
Corrente nominale termica Rated thermal current	Ith [A]	25	40	63	80	100	125	
Valore nominale di dimensione cavo Nominal value with cable size	(mm ²)	4	10	16	25	35	50	
Correntenominale d'impiegopermotore3fasi Rated operational current for 3-phase motor	Ie [A]							
AC-21A	400/415V	25	40	63	80	100	125	
	500 V	25	40	63	80	100	125	
	690 V	25	40	63	80	100	125	
AC-22A	400/415V	16	25	40	63	80	125	
	500 V	16	25	40	63	80	80	
	690 V	16	25	40	63	80	80	
AC-23A	400/415V	16	25	40	40	63	63	
	500 V	16	25	32	40	40	40	
	690 V	16	25	32	40	40	40	
Potenzanominale di impiego 3fasi (1500r.p.m.) motori induttivi a gabbia di scoiattolo Rated operational power for 3-phase (1500 r.p.m.) squirrel cage induction motors	[kW]							
AC-23A	400/415V	7,5	11	22	22	30	30	
	500 V	7,5	15	22	30	30	30	
	690 V	11	22	30	37	37	37	
Caratteristica nominale di cortocircuito condizionato da fusibile Rated fuse short circuit current								
Tipo fusibile / Back-up fuse	[A]	63	63	63	80	80	125	
Valore efficace / R.M.S. value	[kA]	50	50	50	50	50	30	
Valore di picco / Peak value	[kA]	7,2	7,2	7,2	8,7	8,7	10	
Potere nominale di chiusura in corto circuito Icm Rated short circuit making capacity								
690V	[kA]	2,5	2,5	2,5	3,3	3,3	3,3	
Corrente di breve durata nominale Icw Rated Short time withstand current	[kA]							
690V	[kA]	1,7	1,7	1,7	2,3	2,3	2,3	
Potere di interruzione nominale Icn Rated breaking capacity	[A]							
AC-23	400/415V	128	200	320	320	504	504	
	500 V	128	200	256	320	320	320	
	690 V	128	200	256	320	320	320	
Durata elettrica / Electrical life	[n.ops.]	3000	3000	3000	3000	3000	3000	
Durata meccanica / Mechanical life	[n.man.]	50000	50000	50000	50000	50000	50000	
Sezione di cavo collegabile Terminal capacity	Cu [mm ²]	1,5 - 16	1,5 - 16	1,5 - 16	2,5-35	2,5-35	2,5-50	
Coppia di serraggio Max terminal torque	[Nm]	1,8	1,8	1,8	2,5	2,5	2,5	

LOAD BREAK SWITCHES

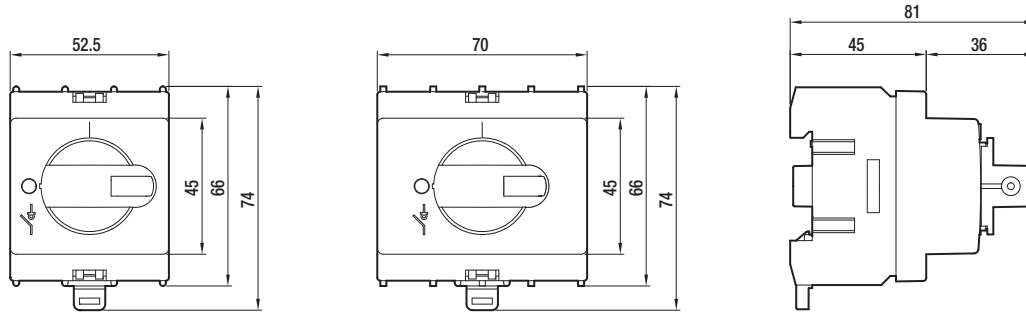
SM 3 POLES



SM 4 POLES



DIRECT HANDLE SM-DH3 / SM-DH4



HANDLES SM-HA

