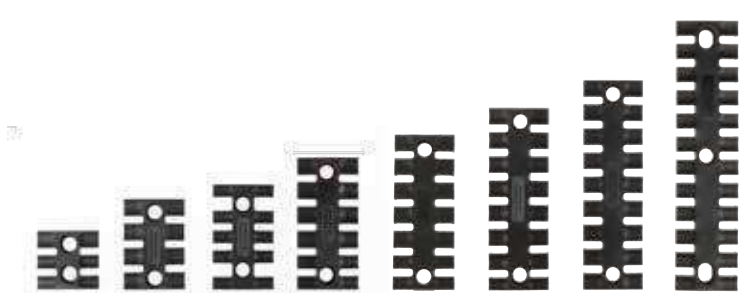
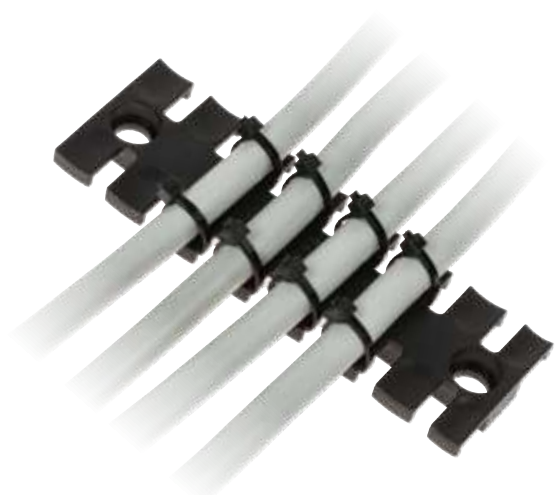




Strain relief modules - screw fixing

- ▶ Modules also available with aluminum or brass bushings
- ▶ Strain relief acc. to EN 62444
- ▶ Easy to install
- ▶ Cost efficient solution
- ▶ UL94V0

Modules without bushings					
Model	Code	Dimensions [mm]		Teeth	Pcs /pack
		L1	L2		
AP 39	1733020003	38.5	19.5	3	1 / 10
AP 60	1733020004	59.5	43.5	4	
AP 70	1733020005	69.1	43.5	5	
AP 87	1733020006	86.5	68	6	
AP 103	1733020007	102.5	84	7	
AP 121	1733020008	121	102.5	8	
AP 140	1733020009	139.5	121	9	
AP 180	1733020010	180	157	12	



The AP modules are used in electrical switchboards and equipment keeping cables tidy whilst providing strain relief according to EN 62444.

The cables can be fixed with standard plastic ties or reusable velcro ties.

Spacers are available for multi-tier applications.

3

Technical data

Material: Polyamide (PA)

Flammability: self-extinguishing acc. to UL94-V0

Temperature: -40°C... +140°C (static)

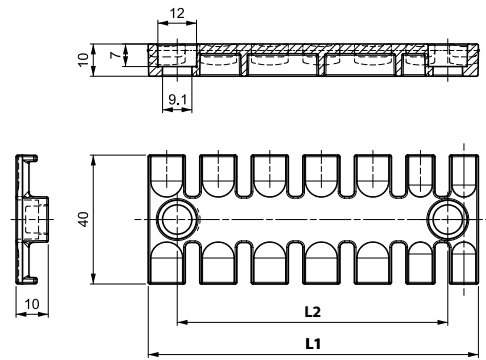
Features: halogens and silicones free

Related products

DZ spacers






FV velcro cable ties

Dimensions [mm]



--	--	--	--	--	--	--	--	--	--



Modules with aluminum bushings			Modules with brass bushings			Dimensions [mm]		Teeth	Pcs /pack
Model	Code	Bushing	Model	Code	Bushing	L1	L2		
AP 39 BA4	1733021403	 Ø4	AP 39 BR4	1733022403	 Ø4	38.5	19.5	3	1 / 10
AP 60 BA4	1733021404		AP 60 BR4	1733022404		59.5	43.5	4	
AP 70 BA4	1733021405		AP 70 BR4	1733022405		69.1	43.5	5	
AP 87 BA4	1733021406		AP 87 BR4	1733022406		86.5	68	6	
AP 103 BA4	1733021407		AP 103 BR4	1733022407		102.5	84	7	
AP 121 BA4	1733021408		AP 121 BR4	1733022408		121	102.5	8	
AP 140 BA4	1733021409		AP 140 BR4	1733022409		139.5	121	9	
AP 180 BA4	1733021410		AP 180 BR4	1733022410		180	157	12	
AP 39 BA5	1733021503	 Ø5	AP 39 BR5	1733022503	 Ø5	38.5	19.5	3	1 / 10
AP 60 BA5	1733021504		AP 60 BR5	1733022504		59.5	43.5	4	
AP 70 BA5	1733021505		AP 70 BR5	1733022505		69.1	43.5	5	
AP 87 BA5	1733021506		AP 87 BR5	1733022506		86.5	68	6	
AP 103 BA5	1733021507		AP 103 BR5	1733022507		102.5	84	7	
AP 121 BA5	1733021508		AP 121 BR5	1733022508		121	102.5	8	
AP 140 BA5	1733021509		AP 140 BR5	1733022509		139.5	121	9	
AP 180 BA5	1733021510		AP 180 BR5	1733022510		180	157	12	
AP 39 BA6	1733021603	 Ø6	AP 39 BR6	1733022603	 Ø6	38.5	19.5	3	1 / 10
AP 60 BA6	1733021604		AP 60 BR6	1733022604		59.5	43.5	4	
AP 70 BA6	1733021605		AP 70 BR6	1733022605		69.1	43.5	5	
AP 87 BA6	1733021606		AP 87 BR6	1733022606		86.5	68	6	
AP 103 BA6	1733021607		AP 103 BR6	1733022607		102.5	84	7	
AP 121 BA6	1733021608		AP 121 BR6	1733022608		121	102.5	8	
AP 140 BA6	1733021609		AP 140 BR6	1733022609		139.5	121	9	
AP 180 BA6	1733021610		AP 180 BR6	1733022610		180	157	12	

