



Cable entry plates for non-terminated cables

- ▶ For several number of cables in a limited space
- ▶ High retaining force thanks to the double membrane
- ▶ Cost efficient solution
- ▶ High IP grade (IP65-66)



Model	Code	Cable nr. - Ø cables [mm]	Dimensions [mm]		Pcs /pack
			Cut-out A1xA2	Plate L1xL2	
DES-PM S 46 7G	1732074607	2 - max. 6.5 5 - max. 8.3	46 x 18 max. +0.5	64 x 28	1 / 10
DES-PM S 46 9G	1732074609	8 - max. 6.5 1 - max. 12.1			
DES-PM S 86 11G	1732078611	2 - max. 6.5 9 - max. 8.35	85 x 16 max. +0.5	103 x 28	1 / 10
DES-PM S 86 17G	1732078617	16 - max. 6.5 1 - max. 12.1			
DES-PM S 112 21G	1732071221	16 - max. 6.5 4 - max. 8.3 1 - max. 12.1	112 x 18 max. +0.5	130 x 28	1 / 10

The DES-PM S is an innovative alternative to standard cable glands on electrical, electronic and telecommunication cabinets and equipment.

The cable is pushed through the front membrane, whilst the second membrane increases the strain relief and liquid resistance.

Double membrane



Technical data

Material: TPE

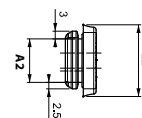
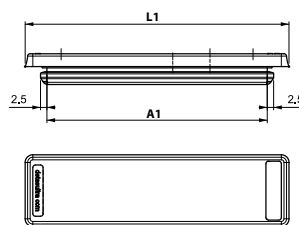
Flammability: self-extinguishing acc. to UL94-V0

Temperature: -40°C... +105°C (static)

Features: halogens and silicones free

Wall thickness: from 1.5 to 2.5 mm

Dimensions [mm]





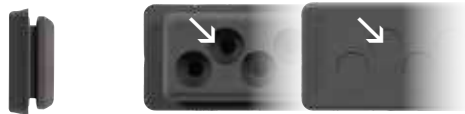
Model	Code	Cable nr. - Ø cables [mm]	Dimensions [mm]		Pcs /pack
			Cut-out A1xA2	Plate L1xL2	
DES-PM S 46 7B	1732074608	2 - max. 6.5 5 - max. 8.3	46 x 18 max. +0.5	64 x 28	1 / 10
DES-PM S 46 9B	1732074610	8 - max. 6.5 1 - max. 12.1			
DES-PM S 86 11B	1732078612	2 - max. 6.5 9 - max. 8.35	85 x 16 max. +0.5	103 x 28	1 / 10
DES-PM S 86 17B	1732078618	16 - max. 6.5 1 - max. 12.1			
DES-PM S 112 21B	1732071222	16 - max. 6.5 4 - max. 8.3 1 - max. 12.1	112 x 18 max. +0.5	130 x 28	1 / 10

Cable entry plates for non-terminated cables

- ▶ For several number of cables in a limited space
- ▶ High retaining force thanks to the double membrane
- ▶ Cost efficient solution
- ▶ High IP grade (IP65-66)



Double membrane



The DES-PM S is an innovative alternative to standard cable glands on electrical, electronic and telecommunication cabinets and equipment.

The cable is pushed through the front membrane, whilst the second membrane increases the strain relief and liquid resistance.

Technical data

Material: TPE

Flammability: self-extinguishing acc. to UL94-V0

Temperature: -40°C... +105°C (static)

Features: halogens and silicones free

Wall thickness: from 1.5 to 2.5 mm

Dimensions [mm]

