

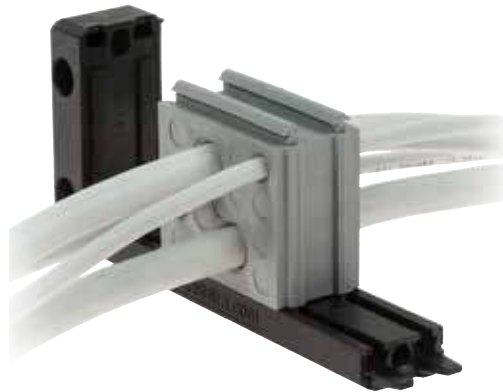


Model	Code	Color	Cable nr. - Ø cables [mm]	Pcs /pack
SPG M14G	1731022314		12 – max. 6.5 2 – max. 12	1 / 10
SPG M14B	1731022414			

DES insert - large - double membrane

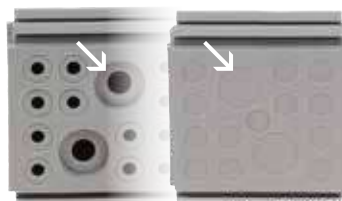
- ▶ For high number of **non-terminated cables**
- ▶ Grey and black colours available
- ▶ UL94V0 for both colours
- ▶ Increased strain relief acc. to EN62444



The SPG M inserts enable a high number of cables to be installed in the DES splittable frames.

The cable is pushed through the front membrane, whilst the second membrane increases the strain relief and liquid resistance.

Double membrane



Technical data

Material: TPE

Flammability: self-extinguishing acc. to UL94-V0

Temperature: -40°C... +110°C (static)

Features: halogens and silicones free

Related products

- DES 24 DES Q
- DES 16 DES PRED 63
- DES 10 DES PRED 90

