

BASE

Rotary limit switch



Rotary limit switch used to control and measure the movement of industrial machines. Its compact size makes it suitable for use in narrow spaces.

FEATURES

- It consists of a gear motor that transfers movement to the cams through a primary input reduction stage (worm gear and helical toothed gear) and one or more secondary output stages (pairs of straight toothed gears).
- Accurate adjustment of cams by means of screws.
- Positive opening NC contacts for safety functions.
- Mechanical life of switches: 1 million operations.
- IP protection degree: Base is classified IP67 and IP69K.
- NEMA protection degree: Base IP67 is classified Type 3.
- Extreme temperature resistance: -40°C to +80°C.
- It features stainless steel AISI 430F transmission and gear driving shafts, self-lubricating technopolymer gears and driving bushes, technopolymer base and cover.
- Sintered bronze bushes are moulded into the base of the limit switch to optimize shaft rotation and prevent rubbing with plastic material.
- All materials and components used are wear resistant and guarantee protection of the unit against water and dust.

OPTIONS

- Revolution ratios from 1:15 to 1:150, achieved by combining different secondary output stages.
- Snap action switches with 1NO+1NC contacts.
- Dedicated cable clamps.

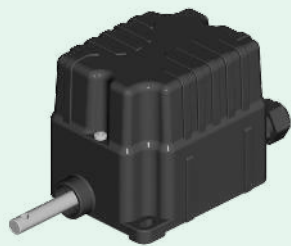
CERTIFICATIONS

- CE marking, cURus* marking and EAC certification.
- Complying with accident prevention regulation BGV C 1 (only for Germany).

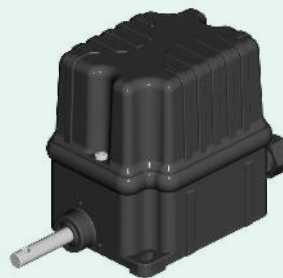
* Not available on all versions.

POSSIBLE ASSEMBLIES




IP 67, with 2 switches



IP 67, with 4 switches



CERTIFICATIONS

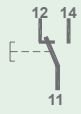
Conformity to Community Directives	2014/35/UE Low Voltage Directive
	2006/42/CE Machinery Directive
	EN 60204-1 Safety of machinery - Electrical equipment of machines
Conformity to CE Standards	EN 60204-32 Safety of machinery - Electrical equipment of machines - Requirements for hoisting machines
	EN 60947-1 Low-voltage switchgear and controlgear
	EN 60947-5-1 Low-voltage switchgear and controlgear - Control circuit devices and switching elements - Electromechanical control circuit devices
Conformity to cULus Standards	EN 60529 Degrees of protection provided by enclosures
	CSA-C22.2 No 14-13 Industrial Control Equipment
	UL 508 Industrial Control Equipment
BGV C 1	Regulations for the prevention of accidents BGV C 1 (only for Germany)
Markings and homologations	Version IP 67:   

GENERAL TECHNICAL SPECIFICATIONS

Ambient temperature	Storage -40°C/+80°C
	Operational -40°C/+80°C
IP protection degree	IP 67
NEMA protection degree	Type 3 (version IP 67)
Insulation category	Class II
Maximum rotation speed	800 rpm
Cable entry	Cable clamp M16
Shafts	Stainless steel AISI 430F

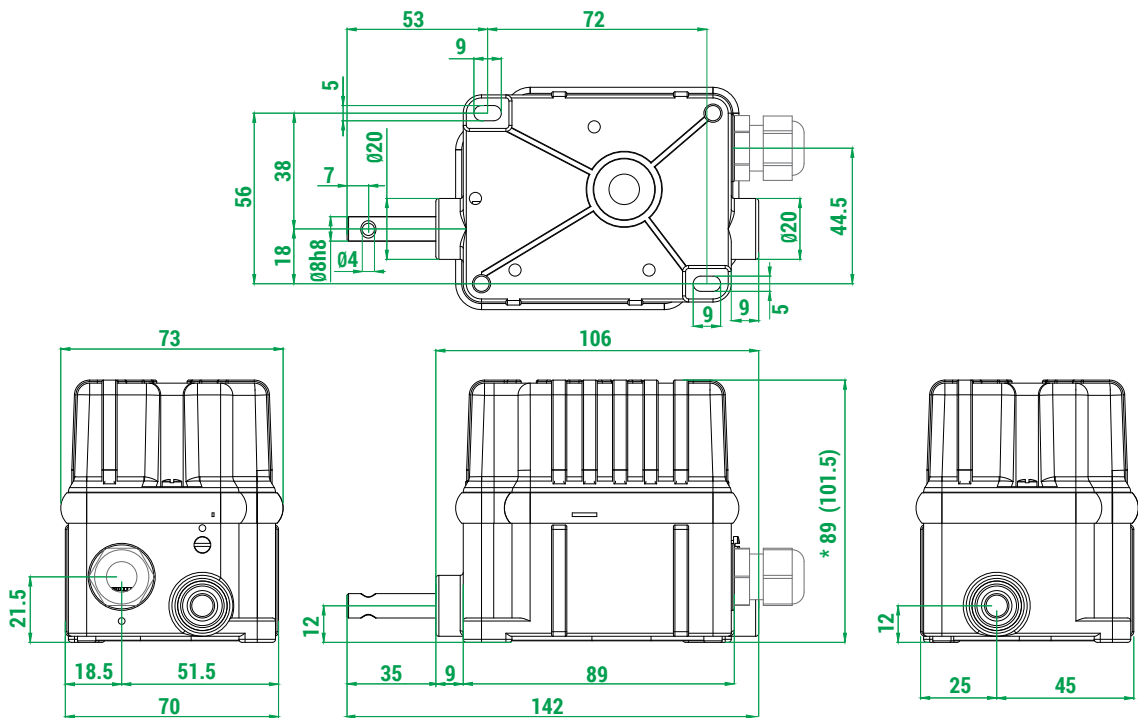
* Not available on all versions.






TECHNICAL SPECIFICATIONS OF THE SWITCHES FOR AUXILIARY CONTROL

Utilisation category	AC 15 - B300
Rated operational voltage	250 Vac
Rated operational current	3 A
Rated thermal current	5 A
Rated insulation voltage	300 Vac
Mechanical life	1x10 ⁶ operations
Connections	6.3 mm Faston taps
Wires	-
Tightening torque	-
Microswitch type	Single break, snap action
Contacts	1NO+1NC (All NC contacts are of the positive opening operation type \rightarrow)
Scheme	
Markings and homologations	CE cULus ENEC

IP 67

- * 2 switches.
- () 4 switches.



Cam			Switching angle	Code
A		1 point	$20.5^{\circ} \pm 0.5^{\circ}$	SL7140
B		10 points	$14.0^{\circ} \pm 0.5^{\circ}$	SL7142
C		60° sector	$78.0^{\circ} \pm 0.5^{\circ}$	SL7141
E		180° sector	$199.5^{\circ} \pm 0.5^{\circ}$	SL7144
H		335° sector	$344.0^{\circ} \pm 0.5^{\circ}$	SL7143