

E.I.C.

*Electrical
Importing
Company*



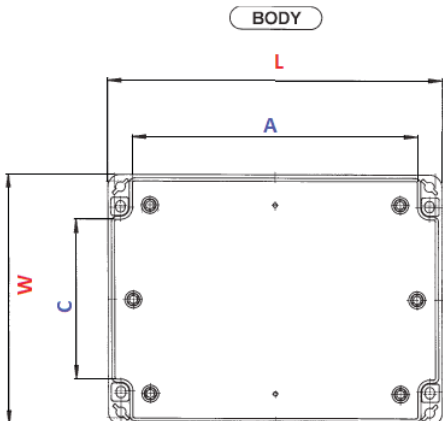
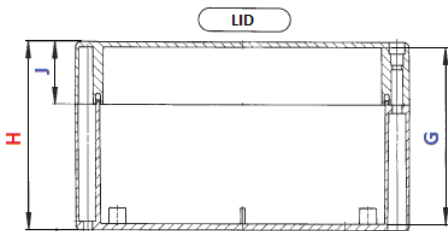
POLYCARBONATE AND ABS ENCLOSURES



- High quality ABS and Polycarbonate Enclosures
- Protection class IP65 – IP66
- Stainless steel quick release quarter turn screws
- Halogen free
- Clear Polycarbonate lid available on all enclosure sizes
- Polyurethane seal
- Accessories include, gear trays, hidden hinges, mounting brackets

BERNSTEIN ENCLOSURES IP66 – external dimensions & part numbers

External Dimensions	Polycarbonate Enclosures		ABS Enclosures	
	Grey Lid	Transparent Lid	Grey Lid	Transparent Lid
L x W x H (mm)				
52 x 50 x 35*	CT-501 \$18.12	CT-501T \$22.26	CT-502 \$15.40	CT-502T \$24.02
65 x 50 x 35*	CT-521 \$24.89	CT-521T \$28.22	CT-522 \$22.60	CT-522T \$26.15
82 x 80 x 55	CT-541 \$34.72	CT-541T \$38.00	CT-542 \$28.81	CT-542T \$32.09
82 x 80 x 85	CT-561 \$40.38	CT-561T \$43.34	CT-562 \$35.64	CT-562T \$36.51
120 x 80 x 55	CT-581 \$40.12	CT-581T \$43.34	CT-582 \$34.50	CT-582T \$36.51
120 x 80 x 85	CT-601 \$46.34	CT-601T \$48.47	CT-602 \$38.30	CT-602T \$41.86
122 x 120 x 55	CT-661 \$50.54	CT-661T \$53.48	CT-662 \$41.58	CT-662T \$44.86
122 x 120 x 85	CT-681 \$56.11	CT-681T \$60.03	CT-682 \$46.62	CT-682T \$50.54
160 x 80 x 55	CT-621 \$45.47	CT-621T \$48.69	CT-622 \$38.64	CT-622T \$42.20
160 x 80 x 85	CT-641 \$51.46	CT-641T \$54.10	CT-642 \$41.86	CT-642T \$45.47
160 x 120 x 90	CT-721 \$69.52	CT-721T \$74.00	CT-722 \$60.59	CT-722T \$65.66
200 x 120 x 75	CT-761 \$73.36	CT-761T \$79.02	CT-762 \$60.59	CT-762T \$65.94
200 x 120 x 90	CT-781 \$76.64	CT-781T \$82.63	CT-782 \$64.46	CT-782T \$70.14
200 x 150 x 75	CT-821 \$79.35	CT-821T \$87.64	CT-822 \$68.38	CT-822T \$76.64
240 x 120 x 100	CT-801 \$82.91	CT-801T \$89.77	CT-802 \$66.86	CT-802T \$74.93
240 x 160 x 90	CT-841 \$90.97	CT-841T \$98.95	CT-842 \$73.36	CT-842T \$81.48
240 x 160 x 120	CT-861 \$117.71	CT-861T \$126.34	CT-862 \$96.88	CT-862T \$105.81
250 x 160 x 90	CT-901 \$93.04	CT-901T \$100.74	CT-902 \$74.93	CT-902T \$82.35
250 x 160 x 120	CT-911 \$116.79	CT-911T \$128.35	CT-912 \$99.82	CT-912T \$111.10
300 x 230 x 86	CT-871 \$151.62	CT-871T \$172.96	CT-872 \$135.18	CT-872T \$148.57
300 x 230 x 110	CT-891 \$173.29	CT-891T \$186.93	CT-892 \$158.42	CT-892T \$172.40
360 x 200 x 120	CT-881 \$237.78	CT-881T \$242.54	CT-882 \$168.81	CT-882T \$179.28



*IP65



Insulated Mounting Plate – versatile mounting of built in components. Thickness CT-50 to CT-60: 1.5mm; CT-62 to CT-78: 2mm; CT-80 to CT-91; 2.5mm



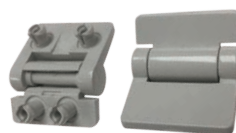
Internal Hinges – flexible quick release & captive lid mounting

Accessories & internal dimensions – BERNSTEIN ENCLOSURES IP66

Insulated Mounting Plate	Internal Hinges (set of 2)	Mounting Bushes (set of 4)	External Hinges (set of 2)	External Mounting Brackets (set of 4)	Internal Dimensions		Lid
					A x C x G (mm)	J (mm)	
CT-50MP \$3.44	N/A	N/A	N/A	↑	30 x 28 x 30	10	
CT-52MP \$5.57	N/A	↑	N/A	↑	43 x 28 x 30	10	
CT-54/56MP \$5.57	↑	CT-BUSH-M3 \$8.40	↑	↑	58 x 38 x 48	15	
CT-54/56MP \$5.57	↑	↓	↑	↑	58 x 38 x 79	15	
CT-58/60MP \$6.05	↑	CT-BUSH-M3A \$8.40	↑	↑	96 x 38 x 48	15	
CT-58/60MP \$6.05	CT-HINGE-INT76 \$29.90	↑	↑	↑	96 x 38 x 78	15	
CT-66/68MP \$8.85	↑	CT-BUSH-M3 \$8.40	↑	↑	98 x 78 x 48	15	
CT-66/68MP \$8.85	↑	↓	↑	↑	98 x 78 x 78	15	
CT-62/64MP \$7.87	↑	CT-BUSH-M3A \$8.40	↑	↑	136 x 38 x 48	15	
CT-62/64MP \$7.87	↓	CT-BUSH-M3 \$8.40	↑	↑	136 x 38 x 78	15	
CT-72MP \$9.55	CT-HINGE-INT79 \$29.90	CT-BUSH-M3 \$8.40	CT-HINGE-EXT \$25.26	CT-BRACKET-EXT \$21.11	136 x 76 x 84	30	
CT-76MP \$22.88	CT-HINGE-INT76 \$29.90	CT-BUSH-M3A \$8.40	↑	↑	176 x 77 x 68	15	
CT-76MP \$22.88	CT-HINGE-INT79 \$29.90	CT-BUSH-M3A \$8.40	↑	↑	176 x 77 x 84	30	
CT-82MP \$15.82	CT-HINGE-INT76 \$29.90	CT-BUSH-M3 \$8.40	↑	↑	215 x 77 x 93	25	
CT-80MP \$17.25	CT-HINGE-INT78 \$29.90	CT-BUSH-M3 \$8.40	↑	↑	176 x 106 x 68	15	
CT-84/86MP \$15.40	CT-HINGE-INT76 \$29.90	↑	↑	↑	216 x 118 x 83	15	
CT-84/86MP \$15.40	CT-HINGE-INT80 \$29.90	CT-BUSH-M3A \$8.40	↑	↑	216 x 118 x 113	45	
CT-90/91MP \$16.80	CT-HINGE-INT76 \$29.90	↑	↑	↑	226 x 118 x 83	15	
CT-90/91MP \$16.80	CT-HINGE-INT80 \$29.90	↓	↑	↑	226 x 118 x 113	45	
CT-87/89MP \$38.36	CT-HINGE-INT79 \$29.90	2 x CT-BUSH-M3 2 x \$8.40	↑	↑	293 x 87 x 79	30	
CT-87/89MP \$38.36	CT-HINGE-INT82 \$29.90	2 x CT-BUSH-M3 2 x \$8.40	↓	↓	275 x 187 x 104	55	
CT-88MP \$34.61	N/A	CT-BUSH-M4 \$7.70	CT-HINGE-EXT2 \$28.00	N/A	321 x 137 x 143	50	



Brass Mounting Bushes – alternative fixing for mounting plates & DIN rails.



External Hinges – simply drill holes using the template & snap into place



External Mounting Brackets – for ease of mounting enclosures without opening the covers

Standard Enclosures – General Technical Information¹

Material

Polycarbonate, transparent polycarbonate or ABS –
Halogen Free²

Seal

Foamed PUR seal

Quick-release fastener

Stainless steel, self-locking, cross recessed head,
¼ turn screw

Colour

RAL 7035 (light grey)

Temperature range of CT enclosures

–40°C to +120°C (Polycarbonate)

–40°C to +80°C (ABS)

Temperature range of seal

–40°C to +100°C (PUR seal)

Protection class

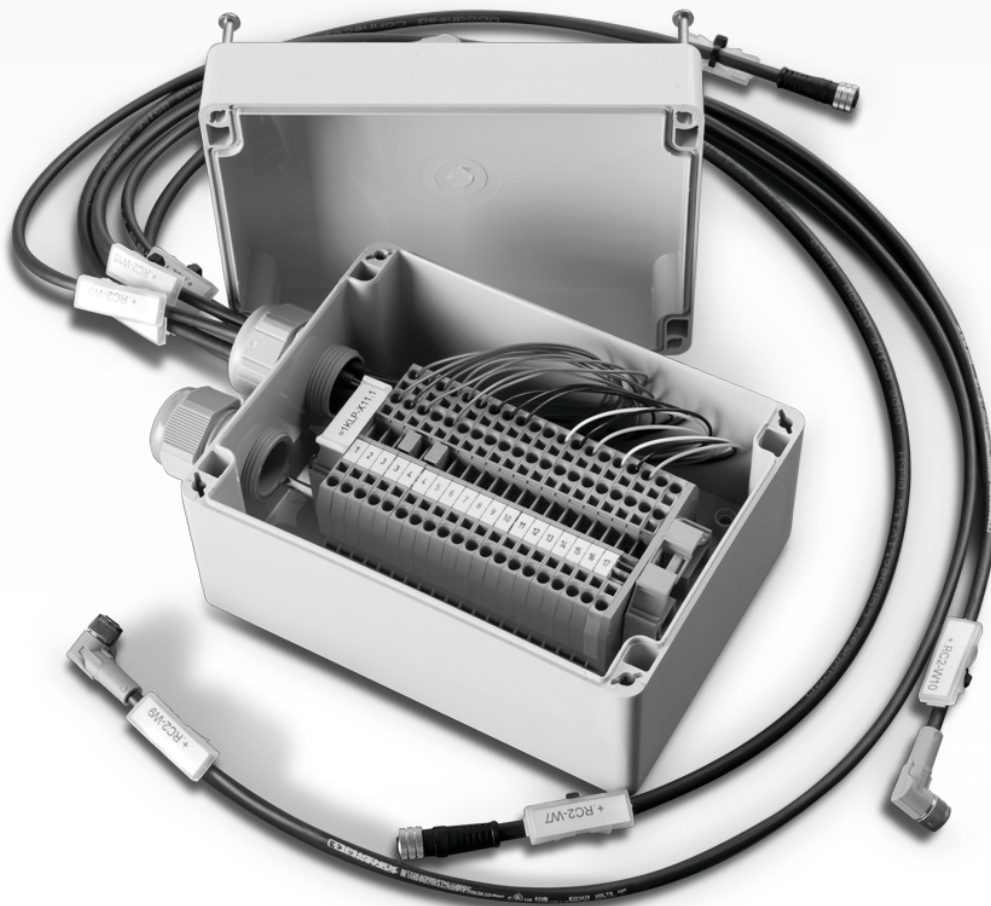
IP 65 – IP 66

Rated voltage

max. 1000 V

¹For detailed Technical Data go to www.eicnz.com and enter the part number into quick search

²Halogen Free – Halogen is a group of toxic chemicals: Chlorine, Fluorine, Bromine, Iodine and Astatine. These elements have been commonly used in the production of electronics and plastics. When these items are burned, the smoke and fumes can contain deadly compounds, hence the move to remove and reduce these toxic materials from the manufacturing process.



Electrical Importing Company Limited
123 Captain Springs Road, Onehunga
PO Box 13 872, Auckland 1643, New Zealand

www.eicnz.com

Phone: (09) 634 2978
Fax: (09) 634 6819
Email: eic@eicnz.com