

68 Q-DIN DISTRIBUTION BOARDS

The 68 Q-DIN Range distribution boards in technopolymer feature a two-section structure: the upper part has a transparent door and is suitable for housing modular protection and control devices for EN 50022 rail. The lower section is arranged to house the following components:

- IEC 309 Range flush-mounting sockets;
- IP44/IP55 66/67 IB Range interlocked switched socket-outlets;
- lids 75 x 85 IP55 27 COMBI-IN Range for holding System Range equipment;
- lids 75 x 85 IP66 74 PS Range arranged for Ø 22 mm push-button/indicator.

The Q-DIN distribution boards are suitable for surface and flush mounting and for temporary systems at trade fairs, exhibitions and public entertainment premises by means of movable trolleys and supports.

TECHNICAL DATA AND COMPLIANCE WITH STANDARDS

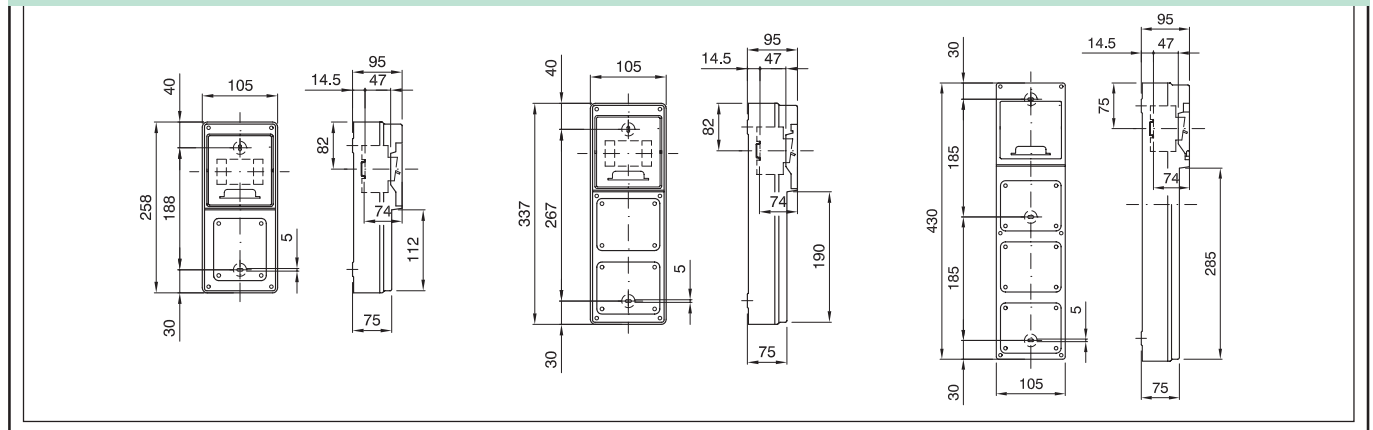
Type of board	Reference Standards	Protection rating (IP)	Protection	Impact resistance at ambient temperature (IK code)	Resistance to abnormal heat and fire	
			Indirect contacts		Thermo-pressure with ball (°C)	Glow Wire Test (°C)
Q-DIN 4 - 8 - 12 - 18 empty	CEI 23-49 IEC 60670	IP 55	☐	IK 09	70	650
Q-DIN 4 - 8 - 12 - 18 factory-wired (DBU)	CEI 17-13-3 EN 60439-3	IP 44 / IP 55		IK 09 (envelope) IK 08 (residential sockets)		850 (active parts) 650 (passive parts)

BEHAVIOUR WITH CHEMICAL AND ATMOSPHERIC AGENTS

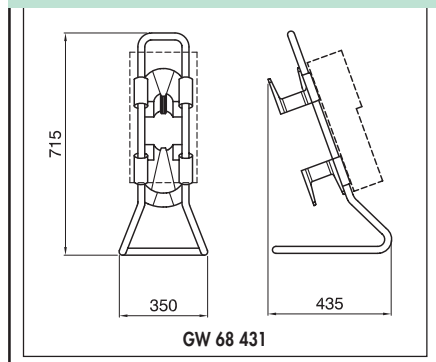
Agent	Saline solution	Acids		Bases		Solvents				Mineral oil	UV Rays
		Concentrated	Diluted	Concentrated	Diluted	Hexane	Benzol	Acetone	Alcohol		
Resistance	Resistant	Limited resistance	Resistant	Limited resistance	Resistant	Limited resistance	Not resistant	Not resistant	Not resistant	Limited resistance	Limited resistance

DIMENSION TABLES

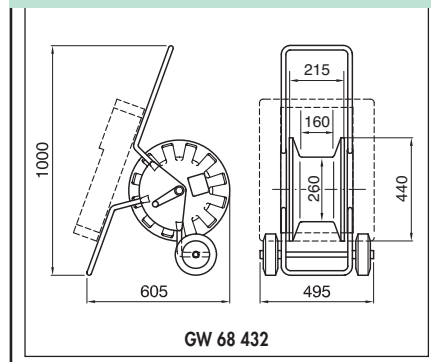
Q - DIN 4 BOARDS



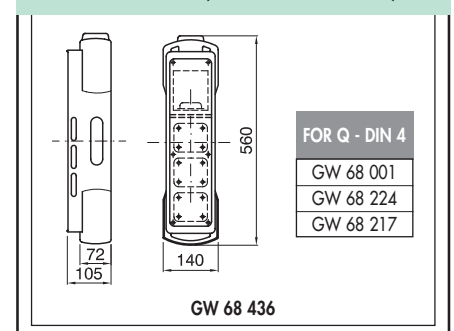
SUPPORT FOR Q - DIN 8



SUPPORT FOR Q - DIN 12 E Q - DIN 18

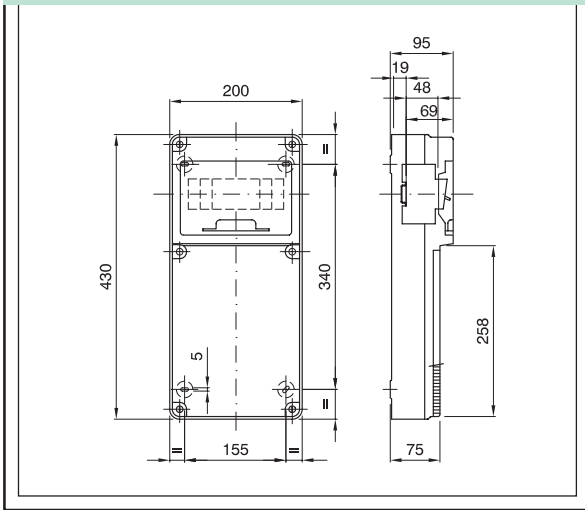


SHOCKPROOF CASE FOR WATERTIGHT BOARDS Q - DIN 4 (430 x 105 x 95 mm)

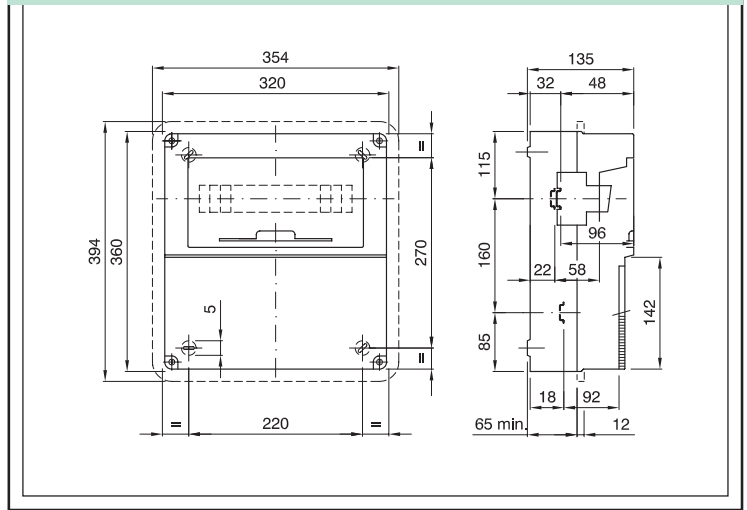


DIMENSION TABLES

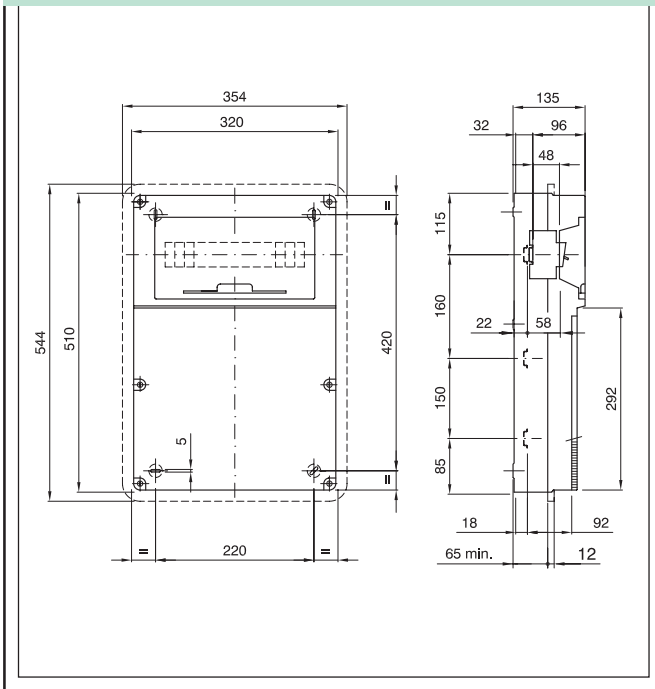
Q - DIN 8 BOARDS



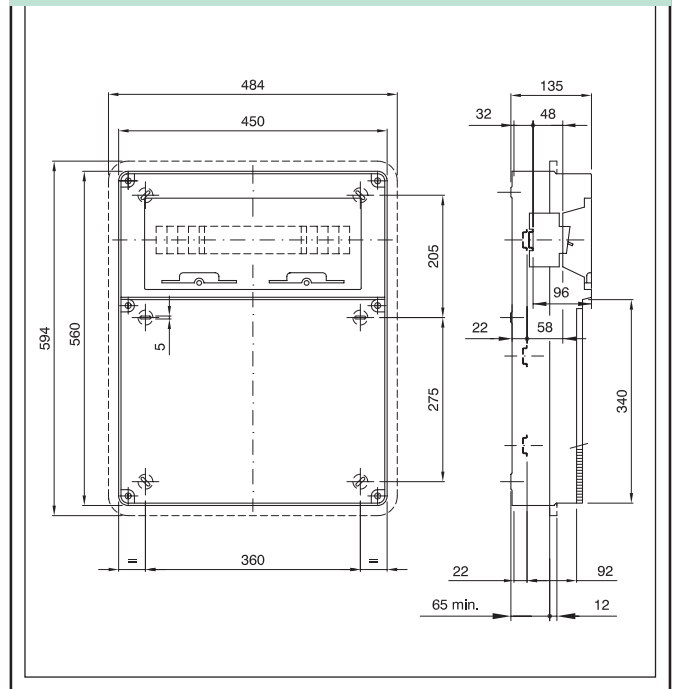
Q - DIN 12 BOARDS



Q - DIN 12 BOARDS

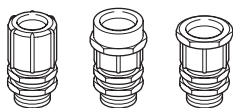


Q - DIN 18 BOARDS



IP 66 COUPLINGS AND CABLE GLANDS

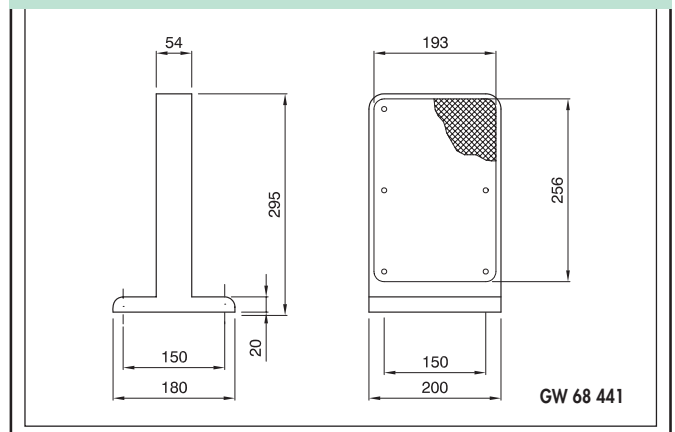
50 AC 52 PGT 52 PG RANGE



NUMBER OF KNOCKOUT HOLES ON EACH HEAD

HOLE SECTION	Ø 23	Ø 23 - 29	Ø 29 - 37	Ø 37 - 48
Q - DIN 4 BOARDS	0	1		
Q - DIN 8 BOARDS	2	1		
Q - DIN 12 BOARDS	2	2	1	
Q - DIN 18 BOARDS	2	2	2	1

FLOOR STANDING DISTRIBUTION PILLAR



GW 68 441