

## Round cable entry plates for non-terminated cables

- ▶ For several number of cables
- ▶ High retaining force thanks to the double membrane
- ▶ Cost efficient solution
- ▶ High IP grade (IP65-66)
- ▶ Metric sized



The round metric DES-PM M is an innovative alternative to standard cable glands on electrical, electronic and telecommunication cabinets and equipment.

The cable is pushed through the front membrane, whilst the second membrane increases the strain relief and liquid resistance.

### Technical data

**Material:** TPE

**Flammability:** self-extinguishing acc. to UL94-V0

**Temperature:** -40°C... +105°C (static)

**Features:** halogens and silicones free

**Type 1:** wall thickness from 1.5 to 2.5 mm

**Type 2:** wall thickness from 2.8 to 4 mm

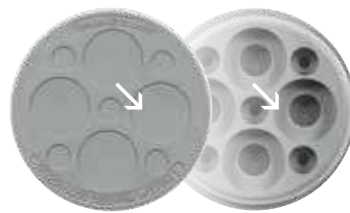
### Related products

Hydraulic punch driver HY360



Model	Code	Cable nr. - Ø cables [mm]	Dimensions [mm]		Pcs /pack
			Ø Cut-out	Ø Plate	
DES-PM M 25 4G	type 1: 1732062504	4 - max. 8	min.: 25	34	1
			max.: 26		
DES-PM M 25 6G	type 1: 1732062506	4 - max. 5.2 2 - max. 9.4	recomm.: 25.5		/ 10
DES-PM M 32 10G	type 1: 1732063210 type 2: 1732263210	6 - max. 5.2 2 - max. 6.4 2 - max. 9.4	min.: 32	40	1
			max.: 33		
DES-PM M 32 10G			recomm.: 32.5		/ 10
DES-PM M 50 9G	type 1: 1732065009	5 - max. 7 4 - max. 18.3			
DES-PM M 50 11G	type 1: 1732065011	7 - max. 7 3 - max. 11.4 1 - max. 22			
DES-PM M 50 12G	type 1: 1732065012 type 2: 1732265012	10 - max. 9 2 - max. 11.4		62	1
DES-PM M 50 15G	type 1: 1732065015	2 - max. 6 4 - max. 7.2 4 - max. 9.7 5 - max. 12	min.: 50		/ 10
			max.: 51		
DES-PM M 50 15G			recomm.: 50.5		
DES-PM M 50 17G	type 1: 1732065017	5 - max. 5.5 5 - max. 6.5 3 - max. 9.7 4 - max. 11.4			
DES-PM M 50 20G	type 1: 1732065020	16 - max. 6.5 4 - max. 9.7			

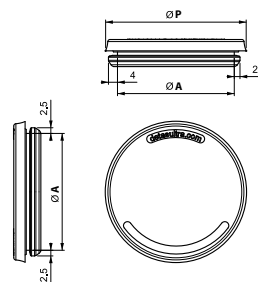
Double membrane



Type 1 Type 2



### Dimensions [mm]





Model	Code	Cable nr. - Ø cables [mm]	Dimensions [mm]		Pcs /pack
			Ø Cut-out	Ø Plate	
<b>DES-PM M 25 4B</b>	type 1: <b>1732063505</b>	<b>4 - max. 8</b>	min.: <b>25</b> max.: <b>26</b> recomm.: <b>25.5</b>	<b>34</b>	<b>1</b> / 10
<b>DES-PM M 25 6B</b>	type 1: <b>1732063507</b>	<b>4 - max. 5.2</b> <b>2 - max. 9.4</b>			
<b>DES-PM M 32 10B</b>	type 1: <b>1732064211</b> type 2: <b>1732264211</b>	<b>6 - max. 5.2</b> <b>2 - max. 6.4</b> <b>2 - max. 9.4</b>	min.: <b>32</b> max.: <b>33</b> recomm.: <b>32.5</b>	<b>40</b>	<b>1</b> / 10
<b>DES-PM M 50 9B</b>	type 1: <b>1732066010</b>	<b>5 - max. 7</b> <b>4 - max. 18.3</b>			
<b>DES-PM M 50 11B</b>	type 1: <b>1732066012</b>	<b>7 - max. 7</b> <b>3 - max. 11.4</b> <b>1 - max. 22</b>			
<b>DES-PM M 50 12B</b>	type 1: <b>1732066013</b> type 2: <b>1732266013</b>	<b>10 - max. 9</b> <b>2 - max. 11.4</b>	min.: <b>50</b> max.: <b>51</b> recomm.: <b>50.5</b>	<b>62</b>	<b>1</b> / 10
<b>DES-PM M 50 15B</b>	type 1: <b>1732066016</b>	<b>2 - max. 6</b> <b>4 - max. 7.2</b> <b>4 - max. 9.7</b> <b>5 - max. 12</b>			
<b>DES-PM M 50 17B</b>	type 1: <b>1732066018</b>	<b>5 - max. 5.5</b> <b>5 - max. 6.5</b> <b>3 - max. 9.7</b> <b>4 - max. 11.4</b>			
<b>DES-PM M 50 20B</b>	type 1: <b>1732066021</b>	<b>16 - max. 6.5</b> <b>4 - max. 9.7</b>			

## Round cable entry plates for non-terminated cables

- ▶ For several number of cables
- ▶ High retaining force thanks to the double membrane
- ▶ Cost efficient solution
- ▶ High IP grade (IP65-66)
- ▶ Metric sized



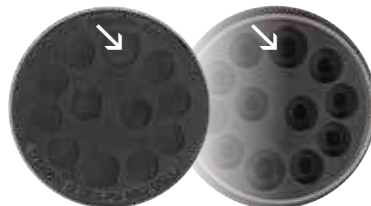
The round metric DES-PM M is an innovative alternative to standard cable glands on electrical, electronic and telecommunication cabinets and equipment.

The cable is pushed through the front membrane, whilst the second membrane increases the strain relief and liquid resistance.

Type 1 Type 2



Double membrane



## Technical data

**Material:** TPE

**Flammability:** self-extinguishing acc. to UL94-V0

**Temperature:** -40°C... +105°C (static)

**Features:** halogens and silicones free

**Type 1:** wall thickness from 1.5 to 2.5 mm

**Type 2:** wall thickness from 2.8 to 4 mm

## Related products

Hydraulic punch driver HY360

## Dimensions [mm]

