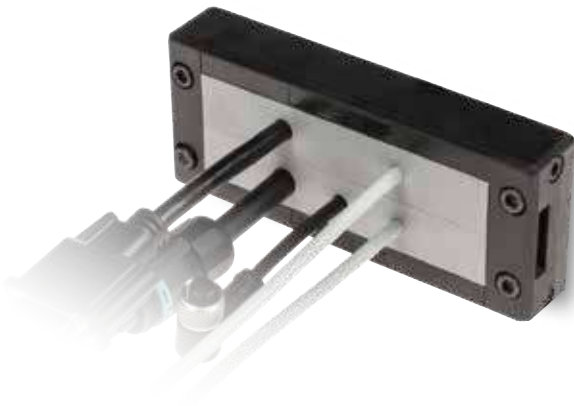




Splittable frame for pre-terminated cables

- ▶ Multiple possible configurations in one frame size
- ▶ Frame screws in AISI304 Stainless Steel
- ▶ Integrated gasket
- ▶ Strain relief according to EN 62444
- ▶ Sturdy construction IK10
- ▶ Up to IP66



Model	Code	Some possible configurations	Cut-out [mm]	Pcs /pack
DES 24	1731010024		108 x 39	1 / 10
Upon request:	1731991020	Set of 4 mounting screws in AISI304 with Black Dacromet finishing		1 / 10

1

The DES 24 cable entry system consists of a splittable frame designed to accommodate small (SPP), multiple (X) or large (SPG) inserts for cables in the same frame. Future cable size changes can be easily accommodated.

Thanks to the robust construction, the DES 24 is a long lasting product.

Technical data






Material: PP+GF

Flammability: self-extinguishing acc. to UL94-V0

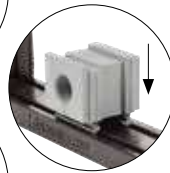
Temperature: -40°C... +155°C (static)

Features: halogens and silicones free

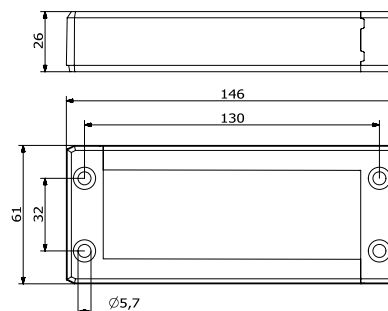
Related products

-  Inserts SPG and SPG M
-  Inserts SPP and SPP K
-  Inserts SPP 2x
-  Inserts SPP 4x
-  Flap frame

Hydraulic punch driver HY360



Dimensions [mm]



				up to IP66	up to NEMA 4X		IK10		
--	--	--	--	------------	---------------	--	------	--	--